

WM1819 Viable Cells- WM1819-01-0001

Code: WM1819-01-0001

Size: 1 mL

Product Description: WM1819 Viable Cells- WM1819-01-0001

Concentration: 1x10E6 Count By Hemocytometer

PhysicalState: Frozen Cell Suspension

Label	Unconjugated
Buffer	None
Stabilizer	None
Preservative	None
Storage Condition	Cells are frozen with 90% FBS/10% DMSO solution at about 1x10 ⁶ cells/ml. Store vial in liquid nitrogen upon arrival.
Synonyms	Melanoma, patient derived tumor, tumor models, skin cancer, xenograft
Application Note	The key applications of these cell lines include genetic studies, xenograft production, drug testing, and drug target discovery. These cell line models can be used in various biological assays, and for identifying critical target genes, and cell signaling pathways.
Background	WM1819 is a human melanoma cell line that displays mesenchymal morphology. This cell line features the specific V600E (Val600Glu) mutation at codon 600 in the BRAF gene. This mutation causes constitutively active kinase activity and activation of MEK and ERK signaling pathway. WM1819 cells produce xenograft tumors when injected into immunocompromised mice.
Purity And Specificity	Cells are sterile, validated by short tandem repeat profiling, and are tested as negative for mycoplasma. It is recommended that cell lines are tested for mycoplasma contamination and short tandem repeat (STR) profiling every 10 passages or each time a frozen seed stock is made. See cell culture protocol for additional details.
Expiration	Expiration date is two (2) years from date of opening.
General Reference	Greshock J, Nathanson K, Martin AM, Zhang L, Coukos G, Weber BL, Zaks TZ. (2007) Cancer cell lines as genetic models of their parent histology: analyses based on array comparative genomic hybridization. <i>Cancer Res.</i> 2007 Apr 15; 67(8):3594-600. Barretina J, Caponigro G, Stransky N. (2012) The Cancer Cell Line Encyclopedia enables predictive modelling of anticancer drug sensitivity. <i>Nature</i> 2012 Mar 28; 483 (7391): 603-607. doi: 10.1038/nature11003. Lin WM, Baker AC, Beroukhim R. (2008) Modeling genomic diversity and tumor dependency in malignant melanoma. <i>Cancer Res.</i> 2008 Feb 1; 68(3): 664-673. Doi: 10.1158/0008-5472.
Stage	UNKNOWN
BRAF	V600E
PTEN	ND
NRAS	WT
CKIT	WT
CDK4	WT
Tumorigenicity	YES
Patient ID	1006
Paired	No
Cell Line Product Type	Viable Cells
Cell Viability	Yes
Morphology	mesenchymal
Medium	Tumor Specialized Media with 2% HI-FBS
Subculture	Cells should be maintained between 30 – 95% confluence in tumor specialized medium with 2% FBS; split cultures 1:6 every 5 days using 0.25% trypsin/EDTA.

Incubation 36°C with 5% CO2

Related Products

FBS-01-0100	FETAL BOVINE SERUM, Certified, Heat Inactivated Origin: United States triple 0.1 micron filtered - FBS-01-0100
MB-006	10X TE pH 7.5 (100 mM Tris HCl 10 mM EDTA) DEPC TREATED - MB-006
MB-009-1000	UltraPure Sterile Water - MB-009-1000
MB-017	10X SDS-PAGE Running Gel Buffer (0.25 M Tris HCl, 1.92 M Glycine, 1.0% SDS pH 8.3) - MB-017

Related Links

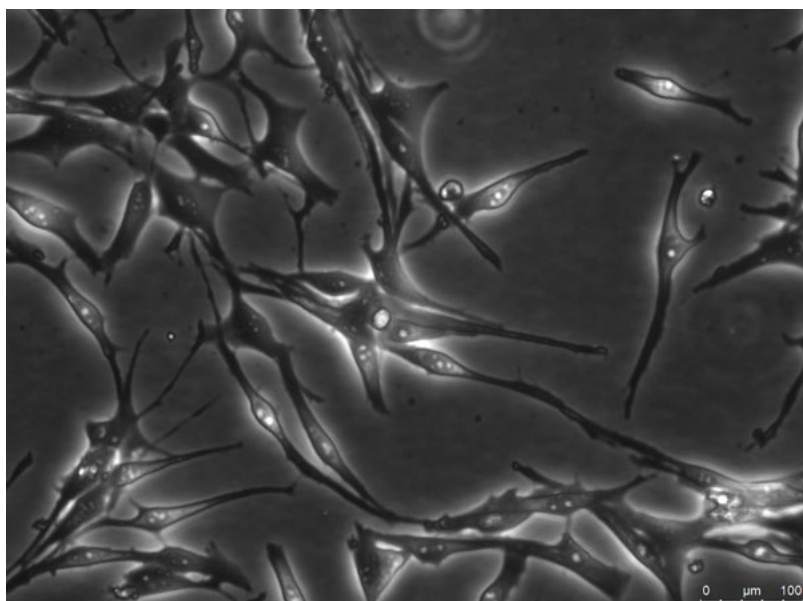
Cell Line EULA

http://www.rockland-inc.com/uploadedfiles/Global_Data/Cell%20Line%20EULA%2030sept2015.pdf

Melanoma Cell Culture Protocol http://www.rockland-inc.com/uploadedfiles/Cell_culture_protocol-melanoma_cell_lines.pdf

Images

1 Established WM1819 viable cell growth in culture using appropriate Tumor Specialized Media with 2%FBS.



2 Human melanoma tumor cells with known gene mutations, disease stage, STR, and RPPA profiling



Disclaimer

Cell Line Limited Use License Required. THIS PRODUCT IS SUBJECT TO AN END-USER LICENSE AGREEMENT (EULA). BY ACCEPTING THIS PRODUCT, RECIPIENT AGREES TO BE BOUND BY THE TERMS OF USE SET FORTH BELOW and SET FORTH IN THE EULA. THIS PRODUCT IS FOR IN VITRO RESEARCH USE ONLY. THERAPEUTIC, DIAGNOSTIC, OR VETERINARY USE IS PROHIBITED. This product may not be resold or transferred by the recipient and may be used only by the recipient, in the recipient's facility and only for research use and other uses specifically permitted by the EULA. No other commercial use is allowed. "Commercial Use" means any and all uses of this product by recipient or others for monetary or other consideration, including providing services, supplying information or data to unaffiliated third parties, and resale or transfer of this product for any use. Recipient has no right to modify, derivatize, genetically engineer or otherwise create variations of this product or associated cells or cell lines. ROCKLAND AND WISTAR MAKE NO REPRESENTATIONS AND EXTEND NO WARRANTIES OF ANY KIND, EITHER EXPRESSED OR IMPLIED, INCLUDING AS TO MERCHANTABILITY OR FITNESS FOR A PARTICULAR PURPOSE, OR THAT THE USE OF THE PRODUCTS WILL NOT INFRINGE ANY PATENT, COPYRIGHT, TRADEMARK, OR OTHER PROPRIETARY RIGHTS. The terms set forth herein and in the EULA shall be governed by the laws of the Commonwealth of Pennsylvania, USA. To obtain a COMMERCIAL USE license for this product, please contact Rockland Immunochemicals, Inc. Please contact a technical service representative for more information. All properties listed are typical characteristics and are not specifications. All suggestions and data are offered in good faith but without guarantee as conditions and methods of use of our products are beyond our control. All claims must be made within 30 days following the date of delivery. The prospective user must determine the suitability of our materials before adopting them on a commercial scale. Suggested uses of our products are not recommendations to use our products in violation of any patent or as a license under any patent of Rockland Immunochemicals, Inc. If you require a commercial license to use this material and do not have one, then return this material, unopened to: Rockland Inc., P.O. BOX 5199, Limerick, Pennsylvania, USA.

Reviews

Submit a product review with an image and you will receive a promo code for the amount of the product you reviewed. Simply log in or register for an account, navigate to the product page, click reviews, and submit your feedback!