

EGFR(D761Y)

Catalog Number: 26120

Gene Symbol: EGFR/HER1/ERBB1

Description: Anti-EGFR(D761Y) Mouse Monoclonal Antibody

Background: EGFR is a receptor tyrosine kinase binding ligands of the EGF family and activating several signaling cascades to convert extracellular cues into appropriate cellular responses. It activates at least 4 major downstream signaling cascades including the RAS-RAF-MEK-ERK, PI3 kinase-AKT, PLCgamma-PKC and STATs modules. Defects in EGFR are associated with lung cancer (LNCR).

Immunogen: A synthetic peptide from the internal region of EGFR which includes the mutation of D761Y, human origin.

Tested Applications: ELISA, WB, IHC

Recommended Dilutions:

| | |
|--------|---------------|
| ELISA: | 1:1000-1:5000 |
| WB: | 1:500-1:1000 |
| IHC: | 1:50-1:100 |

Concentration: 1 mg/ml

Host: Mouse

Clonality: Monoclonal

Isotype: IgG

Purity: Purified from ascites

Format: Liquid

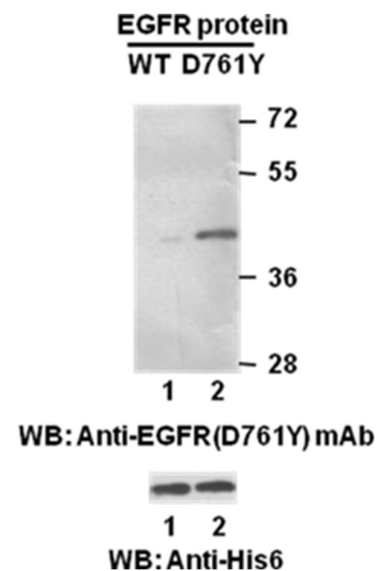
Preservative: No

Constituents: PBS (without Mg²⁺ and Ca²⁺), pH7.4, 150 mM NaCl, 50% glycerol

Species Reactivity: Recognizes EGFR (D761Y), but not wild type EGFR from vertebrates.

Storage Conditions: Store at -20°C. Avoid repeated freezing and thawing

Western blot:

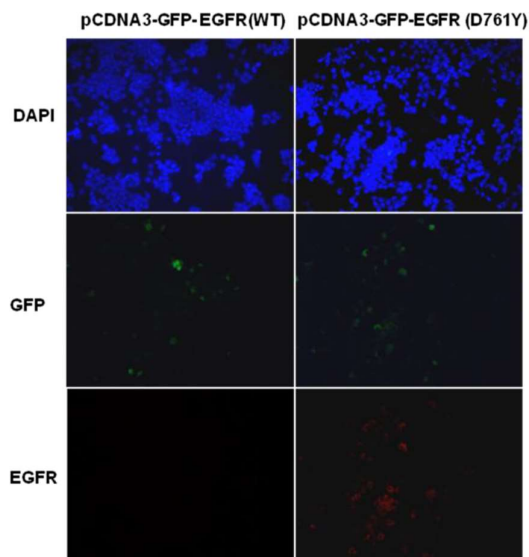


Western blot analysis of recombinant EGFR (L861Q) and wildtype proteins.

Purified His-tagged EGFR (D761Y) protein (amino acids 702-987, lane 2, Cat. # 10240) and corresponding wild type protein (lane 1, Cat. # 10210) were blotted with anti-EGFR (D761Y) mouse monoclonal antibody (Cat. # 26120). Proteins loading (bottom) were blotted with anti-His-tag monoclonal antibody (Cat. # 28004).

FOR RESEARCH USE ONLY. NOT FOR DIAGNOSTIC APPLICATIONS

Immunofluorescence:



Immunofluorescence of cells expressing EGFR proteins with anti-EGFR (D761Y) antibody.

HEK293T cells were transfected with pCDNA3-GFP-EGFR (WT) plasmid (left column) or pCDNA3-GFP-EGFR (D761Y) plasmid (right column), then fixed and stained with anti-EGFR(D761Y) monoclonal antibody (Cat. # 26120).

FOR RESEARCH USE ONLY. NOT FOR DIAGNOSTIC APPLICATIONS