



LKT Laboratories, Inc.

Tubacin

Phone: 888-558-5227
651-644-8424
Fax: 888-558-7329
Email: getinfo@lktlabs.com
Web: lktlabs.com

Product Information

Product ID T8000

CAS No. 537049-40-4

Chemical Name

Synonym

Formula $C_{41}H_{43}N_3O_7S$

Formula Wt. 721.86

Melting Point

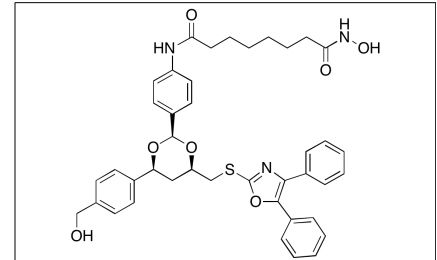
Purity $\geq 96\%$

Solubility DMSO 100 mg/mL (138.53 mM)
Water Insoluble
Ethanol Insoluble

Store Temp $-20^{\circ}C$

Ship Temp Ambient

Description Tubacin is a histone deacetylase 6 (HDAC6) inhibitor that prevents α -tubulin deacetylation and displays anticancer activity. In cellular models of multiple myeloma and acute lymphoblastic leukemia, inhibition of HDAC6 inhibits cell motility and induces accumulation of ubiquitinated proteins, inducing apoptosis. Tubacin's inhibitory action on HDAC also downregulates EGFR levels in a mutant renal epithelial cell line, indicating potential benefit as a treatment for polycystic kidney disease.



Pricing and Availability

Bulk quantities available upon request

Product ID	Size	List Price
T8000	1 mg	\$269.50
T8000	5 mg	\$779.10

References Liu W, Fan LX, Zhou X, et al. HDAC6 regulates epidermal growth factor receptor (EGFR) endocytic trafficking and degradation in renal epithelial cells. PLoS One. 2012;7(11):e49418. d PMID: 23152903.

Aldana-Masangkay GI, Rodriguez-Gonzalez A, Lin T, et al. Tubacin suppresses proliferation and induces apoptosis of acute lymphoblastic leukemia cells. Leuk Lymphoma. 2011 Aug;52(8):1544-55. PMID: 21699378.

Hideshima T, Bradner JE, Wong J, et al. Small-molecule inhibition of proteasome and aggresome function induces synergistic antitumor activity in multiple myeloma. Proc Natl Acad Sci U S A. 2005 Jun 14;102(24):8567-72. PMID: 15937109.

Haggarty SJ, Koeller KM, Wong JC, et al. Domain-selective small-molecule inhibitor of histone deacetylase 6 (HDAC6)-mediated tubulin deacetylation. Proc Natl Acad Sci U S A. 2003 Apr 15;100(8):4389-94. PMID: 12677000.

Caution: This product is intended for laboratory and research use only. It is not for human or drug use.