



LKT Laboratories, Inc.

Prostaglandin E2

Phone: 888-558-5227
651-644-8424
Fax: 888-558-7329
Email: getinfo@lktlabs.com
Web: lktlabs.com

Product Information

Product ID P698583

CAS No. 363-24-6

Chemical Name (Z)-7-[(1R,2R,3R)-3-hydroxy-2-[(E,3S)-3-hydroxyoct-1-enyl]-5-oxocyclopentyl]hept-5-enoic acid

Synonym Dinoprostone; PGE2; 363-24-6; Prostin E2; Prepidil

Formula C₂₀H₃₂O₅

Formula Wt. 352.47

Melting Point 67° C

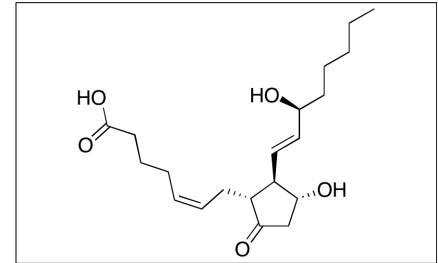
Purity ≥99%

Solubility Water Solubility: 0.058 mg/mL

Store Temp -20° C

Ship Temp Ambient

Description Prostaglandin E2 is the principal metabolic product of COX-2, an enzyme that produces prostaglandins in inflammatory and tumorigenic environments. Prostaglandin E2 is a well-known participant in tumorigenesis. It has been found that elevated levels of prostaglandin E2 is correlated with the metastatic potential of cancer cells. Prostaglandin E2 is used clinically in the induction of labor for pregnancies at or near term.



Bulk quantities available upon request

Product ID	Size
P698583	5 mg
P698583	10 mg
P698583	50 mg

References Pun IH, Chan D, Chan SH, et al. Anti-cancer effects of a novel quinoline derivative 83b1 on human esophageal squamous cell carcinoma through down-regulation of COX-2 mRNA and PGE2. *Cancer Res Treat.* 2017 Jan;49(1):219-229. PMID: 27456944.

Greenhough A, Smartt H, Moore A, et al. The COX-2/PGE2 pathway: key roles in the hallmarks of cancer and adaptation to the tumour microenvironment. *Carcinogenesis.* 2009 Mar 1;30(3):377-386.

Zimmermann KC, Sarbia M, Weber AA, et al. Cyclooxygenase-2 expression in human esophageal carcinoma. *Cancer Res.* 1999 Jan 1;59(1):198-204. PMID: 9892207.

Morris M, Bolnga JW, Verave O, et al. Safety and effectiveness of oral misoprostol for induction of labour in a resource-limited setting: a dose escalation study. *BMC Pregnancy Childbirth.* 2017 Sep 8;17(1):298. PMID: 28886702.

Caution: This product is intended for laboratory and research use only. It is not for human or drug use.