



# LKT Laboratories, Inc.

## Palmatine Chloride Hydrate

Phone: 888-558-5227  
651-644-8424  
Fax: 888-558-7329  
Email: [getinfo@lktlabs.com](mailto:getinfo@lktlabs.com)  
Web: [lktlabs.com](http://lktlabs.com)

### Product Information

**Product ID** P0245  
**CAS No.** 171869-95-7  
**Chemical Name** 5,6-Dihydro-2,3,9,10-tetramethoxydibenzo[a,g]quinolizinium chloride hydrate

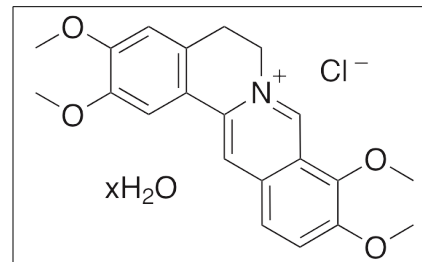
**Synonym** Berbericinine, Palmatin

**Formula**  $C_{21}H_{22}ClNO_4 \cdot xH_2O$   
**Formula Wt.** 387.86  
**Melting Point** 206-207° C(dec)  
**Purity** ≥96%  
**Solubility** Soluble in hot water and alcohol.

**Store Temp** -20° C

**Ship Temp** Ambient

**Description** Palmatine is an isoquinoline alkaloid found in *Corydalis*, *Phellodendron*, *Enantia*, and other plants. Palmatine exhibits sedative, antidepressant, antioxidative, anti-ulcerative, antacid, anticancer, and anti-metastatic activities. Palmatine binds hemoglobin and DNA at AT base pairs. In animal models, palmatine decreases locomotor activity and levels of dopamine, 5-HT, and homovanillic acid. In prostate cancer cells, palmatine decreases growth and invasion as well as activation of FLIP and NF-κB. Palmatine also decreases immobility time in animals undergoing the forced swim test and tail suspension test. In separate animal models, this compound acts as a radical scavenger, inhibits *Helicobacter* growth, and decreases gastric ulcer formation.



**Bulk quantities available upon request**

| Product ID | Size |
|------------|------|
| P0245      | 1 g  |
| P0245      | 5 g  |
| P0245      | 10 g |

**References** Hambright HG, Bath IS, Xie J, et al. Palmatine inhibits growth and invasion in prostate cancer cell: Potential role for rpS6/NFκB/FLIP. *Mol Carcinog*. 2014 Jul 7. [Epub ahead of print]. PMID: 25043857.

Liu B, Yan X, Cao S, et al. Studies on the interaction of palmatine hydrochloride with bovine hemoglobin. *Luminescence*. 2014 May;29(3):211-8. PMID: 23696111.

Jung J, Choi JS, Jeong CS. Inhibitory Activities of Palmatine from *Coptis chinensis* Against *Helicobacter pylori* and Gastric Damage. *Toxicol Res*. 2014 Mar;30(1):45-8. PMID: 24795799.

Dhingra D, Bhankher A. Behavioral and biochemical evidences for antidepressant-like activity of palmatine in mice subjected to chronic unpredictable mild stress. *Pharmacol Rep*. 2014 Feb;66(1):1-9. PMID: 24905299.

Bhadra K, Maiti M, Kumar GS. Molecular recognition of DNA by small molecules: AT base pair specific intercalative binding of cytotoxic plant alkaloid palmatine. *Biochim Biophys Acta*. 2007 Jul;1770(7):1071-80. PMID: 17434677.

Hsieh MT, Su SH, Tsai HY, et al. Effects of palmatine on motor activity and the concentration of central monoamines and its metabolites in rats. *Jpn J Pharmacol*. 1993 Jan;61(1):1-5. PMID: 7679763.

**Caution:** This product is intended for laboratory and research use only. It is not for human or drug use.