



## Product Information

Product ID L1982

CAS No. 103476-89-7

Chemical Name

Synonym

Formula  $C_{20}H_{38}N_6O_4 \cdot 1/2H_2SO_4$

Formula Wt. 475.59

Melting Point

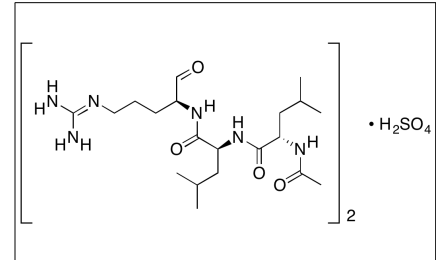
Purity  $\geq 95\%$

Solubility Soluble in water (10 mg/mL), acetic acid, ethanol (30 mg/mL), DMSO (15 mg/mL), DMF (25 mg/mL)

Store Temp  $-20^{\circ}C$

Ship Temp Ambient

Description Leupeptin hemisulfate is a synthetic peptide protease inhibitor.



**Bulk quantities available upon request**

Product ID	Size
L1982	5 mg
L1982	10 mg
L1982	25 mg

**References** Ganapathi TR, Sunil Kumar GB, Srinivas L, et al. Analysis of the limitations of hepatitis B surface antigen expression in soybean cell suspension cultures. *Plant Cell Rep.* 2007 Sep;26(9):1575-84. PMID: 17534624.

Morejohn LC, Bureau TE, Fosket DE. Inhibition of plant cell proteolytic activities that degrade tubulin. *Cell Biol Int Rep.* 1985 Sep;9(9):849-57. PMID: 2864138.

**Caution:** This product is intended for laboratory and research use only. It is not for human or drug use.