



LKT Laboratories, Inc.

Enalapril Maleate

Phone: 888-558-5227
651-644-8424
Fax: 888-558-7329
Email: getinfo@lktlabs.com
Web: lktlabs.com

Product Information

Product ID E5201

CAS No. 76095-16-4

Chemical Name N-[(1S)-1-(Ethoxycarbonyl)-3-phenylpropyl]-L-alanyl-L-proline maleate

Synonym Amprace, Bitensil, Cardiovet, Enaloc, Innovace, Lotrial, Naprilene, Pres, Renivace, Xanef

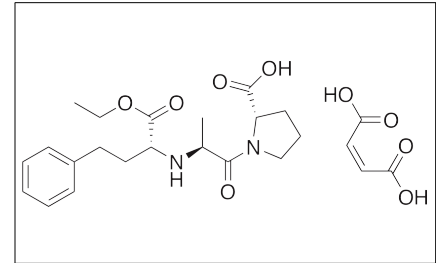
Formula C₂₀H₂₈N₂O₅ · C₄H₄O₄

Formula Wt. 492.52

Melting Point 143-144.5 °C

Purity ≥98%

Solubility Sparingly soluble in water and methanol.



Bulk quantities available upon request

Product ID	Size
E5201	1 g
E5201	5 g

Store Temp Ambient

Ship Temp Ambient

Description Enalapril is an angiotensin-converting enzyme (ACE) inhibitor that is clinically used to treat hypertension, heart failure, and diabetic nephropathy. Enalapril exhibits antihypertensive activity. Enalapril prevents and reverses renovascular hypertension-induced smooth muscle hypertrophy, collagen deposition, carotid media thickness growth, and other parameters of arterial remodeling. Additionally, enalapril improves endothelial function in migraine sufferers by increasing levels of NO.

References Chen JL, Shang QH, Hu W, et al. Role of TGF-β1/Smads pathway in carotid artery remodeling in renovascular hypertensive rats and prevention by Enalapril and Amlodipine. *J Geriatr Cardiol.* 2012 Jun;9(2):185-91. PMID: 22916067.

Bilan VP, Salah EM, Bastacky S, et al. Diabetic nephropathy and long-term treatment effects of rosiglitazone and enalapril in obese ZSF1 rats. *J Endocrinol.* 2011 Sep;210(3):293-308. PMID: 21680617.

Javanmard SH, Sonbolestan SA, Heshmat-Ghahdarjani K, et al. Enalapril improves endothelial function in patients with migraine: A randomized, double-blind, placebo-controlled trial. *J Res Med Sci.* 2011 Jan;16(1):26-32. PMID: 21448379.

Caution: This product is intended for laboratory and research use only. It is not for human or drug use.