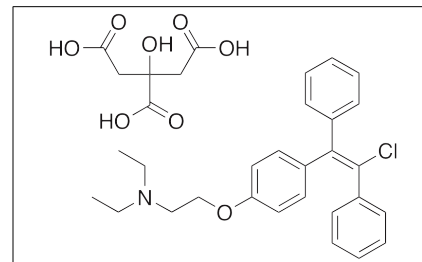




Product Information

Product ID C4559
CAS No. 50-41-9
Chemical Name 2-[4-(2-Chloro-1,2-diphenylethenyl)phenoxy]-N,N-diethylethanamine
Synonym Clomid, Clomphid, Clostilbegyt, Dyneric, Pergotime, Serophene, Clomifene



Formula $C_{26}H_{28}ClNO \cdot C_6H_8O_7$
Formula Wt. 598.09
Melting Point 116.5-118°C
Purity ≥98%
Solubility Slightly soluble in water and chloroform. Soluble in methanol. Insoluble in ether.

Store Temp 4°C
Ship Temp Ambient

Description Clomiphene is a selective estrogen receptor modulator (SERM) that induces ovulation and is used clinically in assisted reproduction. Clomiphene inhibits estrogen receptors in the hypothalamus, upregulating release of gonadotropins such as luteinizing hormone (LH) and follicle-stimulating hormone (FSH). Clomiphene also acts as a functional inhibitor of acid sphingomyelinase (FIASMA).

Bulk quantities available upon request

Product ID	Size
C4559	1 g
C4559	5 g
C4559	10 g

References Amita M, Takahashi T, Tsutsumi S, et al. Molecular mechanism of the inhibition of estradiol-induced endometrial epithelial cell proliferation by clomiphene citrate. *Endocrinology*. 2010 Jan;151(1):394-405. PMID: 19934375.

Shoham Z, Schacter M, Loumaye E, et al. The luteinizing hormone surge--the final stage in ovulation induction: modern aspects of ovulation triggering. *Fertil Steril*. 1995 Aug;64(2):237-51. PMID: 7615097.

Caution: This product is intended for laboratory and research use only. It is not for human or drug use.