



Product Information

Product ID C3477

CAS No. 59729-32-7

Chemical Name (RS)-1-[3-(dimethylamino)propyl]-1-(p-fluorophenyl)-5-phthalanecarbonitrile, hydrobromide

Synonym Celexa, Cipramil, Elopram, Seropram.

Formula C₂₀H₂₁FN₂O • HBr

Formula Wt. 405.31

Melting Point 182-183 °C

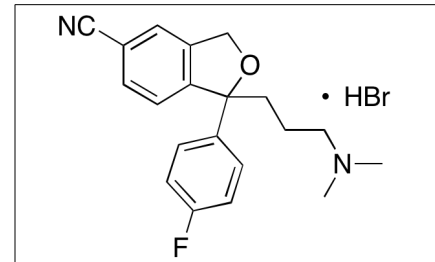
Purity ≥98%

Solubility DMSO (18 mg/ml)
Water (4 mg/ml)
Ethanol (20 mg/ml)

Store Temp Ambient

Ship Temp Ambient

Description Citalopram is a selective serotonin reuptake inhibitor (SSRI) that inhibits the serotonin transporter (SERT); citalopram is clinically used for its antidepressant and anxiolytic activities, although it may prolong the QT interval. The S-isomer of citalopram is active and is sold on its own as escitalopram. Citalopram also exhibits neuroprotective activity, increasing expression of BDNF and inhibiting neuronal apoptosis. Additionally, this compound displays anti-inflammatory benefit, inhibiting arthritis progression in vivo by suppressing TLR signaling and decreasing production of TNF, IL-6, and IFN-γ.



Bulk quantities available upon request

Product ID	Size
C3477	25 mg
C3477	100 mg
C3477	500 mg

References Tan Y, Duan J, Li Y, et al. Effects of citalopram on serum deprivation induced PC12 cell apoptosis and BDNF expression. *Pharmazie*. 2010 Nov;65(11):845-8. PMID: 21155393.

Sacre S, Medghalchi M, Gregory B, et al. Fluoxetine and citalopram exhibit potent antiinflammatory activity in human and murine models of rheumatoid arthritis and inhibit toll-like receptors. *Arthritis Rheum*. 2010 Mar;62(3):683-93. PMID: 20131240.

Apparsundaram S, Stockdale DJ, Henningsen RA, et al. Antidepressants targeting the serotonin reuptake transporter act via a competitive mechanism. *J Pharmacol Exp Ther*. 2008 Dec;327(3):982-90. PMID: 18801947.

Caution: This product is intended for laboratory and research use only. It is not for human or drug use.