



LKT Laboratories, Inc.

## Cinnarizine

Phone: 888-558-5227  
651-644-8424  
Fax: 888-558-7329  
Email: [getinfo@lktlabs.com](mailto:getinfo@lktlabs.com)  
Web: [lktlabs.com](http://lktlabs.com)

### Product Information

**Product ID** C3251

**CAS No.** 298-57-7

**Chemical Name** 1-benzhydryl-4-cinnamyl-piperazine

**Synonym** Aplactan, Aplexal, Apotomin, Artate, Carecin, Cerebolan, 1-trans-Cinnamyl-4-diphenylmethylpiperazine

**Formula** C<sub>26</sub>H<sub>28</sub>N<sub>2</sub>

**Formula Wt.** 368.51

**Melting Point** 118-122 °C

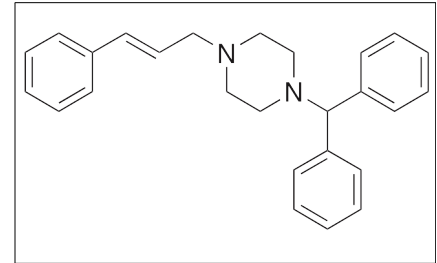
**Purity** ≥98%

**Solubility** Practically insoluble in water. Soluble in dichloromethane or ether. Slightly soluble in methanol

**Store Temp** Ambient

**Ship Temp** Ambient

**Description** Cinnarizine is an inhibitor of L-type voltage-gated Ca<sup>2+</sup> channels that is clinically used to treat migraine and vertigo. Cinnarizine exhibits anticonvulsant/antiepileptic activity in combination with other therapies in animal models. This compound also inhibits D<sub>2</sub> receptors, suppressing stimulant-induced locomotor activity, and acts as a functional inhibitor of acid sphingomyelinase (FIASMA).



**Bulk quantities available upon request**

Product ID	Size
C3251	10 g
C3251	100 g

**References** Taghdiri F, Togha M, Razeghi Jahromi S, et al. Cinnarizine for the prophylaxis of migraine associated vertigo: a retrospective study. Springerplus. 2014 May 7;3:231. PMID: 24834377.

Brahmane RI, Wanmali VV, Pathak SS, et al. Role of cinnarizine and nifedipine on anticonvulsant effect of sodium valproate and carbamazepine in maximal electroshock and pentylenetetrazole model of seizures in mice. J Pharmacol Pharmacother. 2010 Jul;1(2):78-81. PMID: 21350614.

Dall'Igna OP, Tort AB, Souza DO, et al. Cinnarizine has an atypical antipsychotic profile in animal models of psychosis. J Psychopharmacol. 2005 Jul;19(4):342-6. PMID: 15982988.

**Caution:** This product is intended for laboratory and research use only. It is not for human or drug use.