



LKT Laboratories, Inc.

## Chymostatin

Phone: 888-558-5227

651-644-8424

Fax: 888-558-7329

Email: [getinfo@lktlabs.com](mailto:getinfo@lktlabs.com)

Web: [lktlabs.com](http://lktlabs.com)

### Product Information

**Product ID** C2997

**CAS No.** 9076-44-2

**Chemical Name**

**Synonym** N-(N $\alpha$ -Carbonyl-Cpd-X-Phe-al)-Phe

**Formula** C<sub>20</sub>H<sub>16</sub>N<sub>2</sub>O<sub>4</sub>

**Formula Wt.** 1809.1

**Melting Point** 276-278 °C

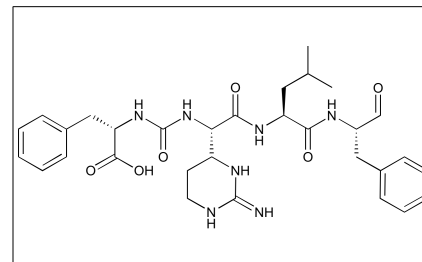
**Purity** ≥95% (mixture of A, B, C)

**Solubility** Soluble in DMSO.

**Store Temp** -20 °C

**Ship Temp** Ambient

**Description** Chymostatin is an inhibitor of proteases such as chymase that is used in research models.



**Bulk quantities available upon request**

Product ID	Size
C2997	1 mg
C2997	5 mg
C2997	25 mg
C2997	50 mg

**References** Paliwal D, Panda SK, Kapur N, et al. Hepatitis E virus (HEV) protease: a chymotrypsin-like enzyme that processes both non-structural (pORF1) and capsid (pORF2) protein. *J Gen Virol.* 2014 Aug;95(Pt 8):1689-700. PMID: 24795447.

Wang T, Han SX, Zhang SF, et al. Role of chymase in cigarette smoke-induced pulmonary artery remodeling and pulmonary hypertension in hamsters. *Respir Res.* 2010 Mar 31;11:36. PMID: 20356378.

**Caution:** This product is intended for laboratory and research use only. It is not for human or drug use.