



LKT Laboratories, Inc.

CFI-400945

Phone: 888-558-5227  
651-644-8424  
Fax: 888-558-7329  
Email: [getinfo@lktlabs.com](mailto:getinfo@lktlabs.com)  
Web: [lktlabs.com](http://lktlabs.com)

## Product Information

Product ID C211324

CAS No. 1338806-73-7

### Chemical Name

Synonym CFI 400945, CFI400945

Formula  $C_{33}H_{34}N_4O_3$

Formula Wt. 534.66

Melting Point

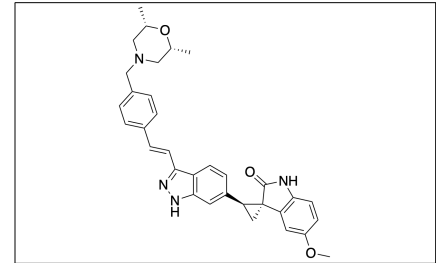
Purity  $\geq 98\%$

Solubility

Store Temp  $-20^{\circ}C$

Ship Temp Ambient

**Description** CFI-400945 is an inhibitor of polo-like kinase 4 (PLK4). PLK4 plays an important role in centriole replication, and inhibition of PLK4 disrupts mitosis. CFI-400945 inhibits tumor growth in models of pancreatic cancer. PLK4 inhibition may be effective against osteosarcoma, where it is theorized that overexpression of PLK4 may be a driving force in osteosarcoma development and preservation.



Product ID	Size
C211324	1 mg
C211324	5 mg
C211324	25 mg
C211324	100 mg

**References** Lohse I., Mason J., et al. Activity of the novel polo-like kinase 4 inhibitor CFI-400945 in pancreatic cancer patient-derived xenografts. *Oncotarget*. 8(2):3064-71 (2017). PMID: 27902970.

Kelleher F., Kores J., et al. Targeting the centrosome and polo-like kinase 4 in osteosarcoma. *Carcinogenesis*. 40(4):493-99 (2019). PMID: 30508038.

**Caution:** This product is intended for laboratory and research use only. It is not for human or drug use.