



LKT Laboratories, Inc.

**Bosutinib**

Phone: 888-558-5227  
651-644-8424  
Fax: 888-558-7329  
Email: [getinfo@lktlabs.com](mailto:getinfo@lktlabs.com)  
Web: [lktlabs.com](http://lktlabs.com)

## Product Information

**Product ID** B5874

**CAS No.** 380843-75-4

**Chemical Name** 4-(2,4-Dichloro-5-methoxyanilino)-6-methoxy-7-[3-(4-methylpiperazin-1-yl)propoxy]quinoline-3-carbonitrile

**Synonym** SKI-606

**Formula** C<sub>26</sub>H<sub>29</sub>Cl<sub>2</sub>N<sub>5</sub>O<sub>3</sub>

**Formula Wt.** 530.45

**Melting Point** 116 °C

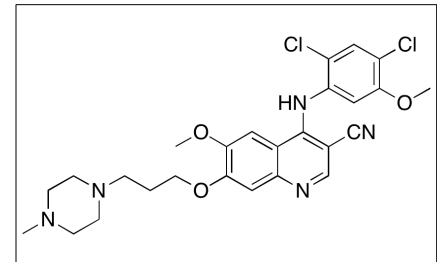
**Purity** ≥98%

**Solubility** MeOH

**Store Temp** Ambient

**Ship Temp** Ambient

**Description** Bosutinib is an anticancer chemotherapeutic and anti-metastatic compound that inhibits src and Abl kinases and is clinically used to treat chronic myeloid leukemia. In vivo, bosutinib does not induce apoptosis but does decrease cell proliferation, inhibit cell differentiation, and inhibit tumor metastases, all likely through inhibition of downstream MAPK signaling. Additionally, bosutinib may alter IGF-1 and IGF binding protein 3 (IGF bp3) signaling as well. This compound also shows neuroprotective and cognition enhancing benefits in animal models of Alzheimer's disease. Bosutinib clears β-amyloid plaques and increases cognitive function by facilitation interaction between parkin and Beclin-1 proteins, which then accumulate in the lysosome for degradation.



**Bulk quantities available upon request**

Product ID	Size
B5874	10 mg
B5874	25 mg
B5874	100 mg

**References** Rassi FE, Khoury HJ. Bosutinib: a SRC-ABL tyrosine kinase inhibitor for treatment of chronic myeloid leukemia. *Pharmgenomics Pers Med.* 2013 Aug 5;6:57-62. PMID: 24019749.

Lonskaya I, Hebron ML, Desforges NM, et al. Tyrosine kinase inhibition increases functional parkin-Beclin-1 interaction and enhances amyloid clearance and cognitive performance. *EMBO Mol Med.* 2013 Aug;5(8):1247-62. PMID: 23737459.

Ulmer A, Tabea Tauer J, Glauche I, et al. TK inhibitor treatment disrupts growth hormone axis: clinical observations in children with CML and experimental data from a juvenile animal model. *Klin Padiatr.* 2013 May;225(3):120-6. PMID: 23716272.

Amsberg GK, Schafhausen P. Bosutinib in the management of chronic myelogenous leukemia. *Biologics.* 2013;7:115-22. PMID: 23674887.

Kim WG, Guigon CJ, Fozzatti L, et al. SKI-606, an Src inhibitor, reduces tumor growth, invasion, and distant metastasis in a mouse model of thyroid cancer. *Clin Cancer Res.* 2012 Mar 1;18(5):1281-90. PMID: 22271876.

**Caution:** This product is intended for laboratory and research use only. It is not for human or drug use.