

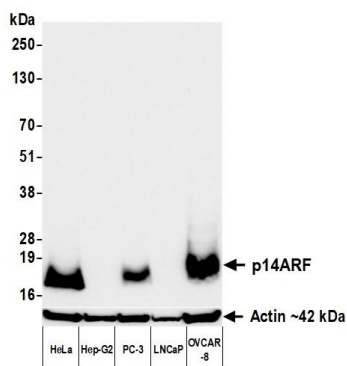
p14ARF Recombinant Monoclonal Antibody [BLR325M]

Rabbit Recombinant Monoclonal

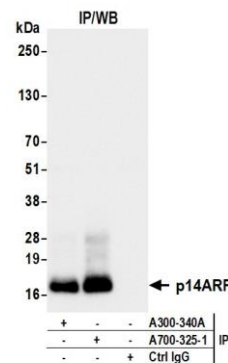
Purified		RefSeq ID	NP_478102.2
Catalog No.	A700-325	Uniprot ID	Q8N726
Lot No.	1	GeneID	1029

APPLICATIONS	WB, IP, IHC, ICC, Flow Cyt
SPECIES REACTIVITY	Human
AMOUNT	100 µl (50+ tests)
CONCENTRATION	100 µg/ml
STORAGE/SHELF LIFE	2 – 8°C / 1 year from date of receipt
PHYSICAL STATE	Liquid
BUFFER	Phosphate Buffered Saline (PBS) with 0.1% BSA and 0.09% Sodium Azide
ISOTYPE	IgG
CLONE #	BLR325M
ORIGIN	USA
PRODUCTION PROCEDURES	Recombinant antibody was purified from cell culture supernatant. Immunogen was a peptide representing a region between residue 100 and 150 of human Cyclin-dependent kinase inhibitor 2A isoform p14ARF using the numbering given in entry NP_478102.2 (Gene
APPLICATIONS	Centrifuge tube to remove product from lid. Optimal working dilutions should be determined experimentally by the investigator. Prepare working dilution immediately before use. Western Blot 1:1,000 Immunoprecipitation 20 µl/mg lysate Immunohistochemistry 1:100 to 1:500. Epitope retrieval with citrate buffer pH 6.0 is recommended for FFPE tissue sections. Immunocytochemistry 1:100 to 1:500. Epitope retrieval with citrate buffer pH 6.0 is recommended for FFPE cell sections. Flow Cytometry Fixed in 4% formaldehyde and permeabilized with 90% methanol. 1 µl per 1 × 10 ⁶ cells.
APPLICATION NOTES	All western blot analysis is performed using 5% Milk-TBST for blocking and as antibody diluent. Primary antibody is incubated overnight. Western blots of cell lysates are performed using Goat anti-Rabbit IgG Heavy and Light Chain Antibody (A120-101P). Western blots of immunoprecipitates are performed using Goat anti-Rabbit Light Chain HRP Conjugate (A120-113P) with 5% Normal Pig Serum (S100-020) added to the blocking buffer.
ADDITIONAL INFO	https://www.fortislife.com/p/A700-325 Use the link above to view SDS, a current list of citations, and other product specific information.

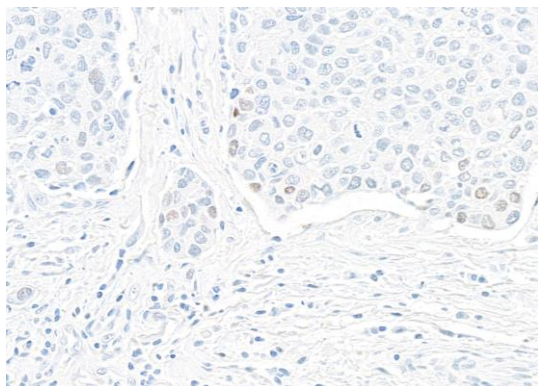
This document certifies that this product has met all of the quality control standards defined by Bethyl Laboratories, Inc.
Michael Spencer, PhD Date: June 25, 2024



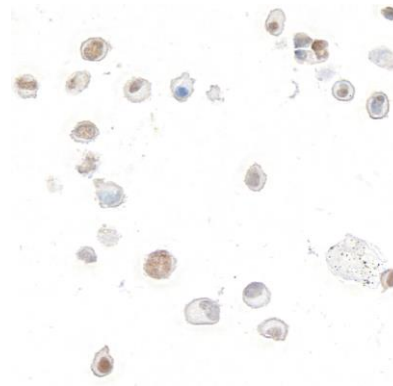
Detection of human p14ARF by western blot. *Samples:* Whole cell lysate (50 µg) from HeLa, Hep-G2, PC-3, LNCaP, and OVCAR-8 cells prepared using NETN lysis buffer. *Antibody:* Rabbit anti-p14ARF recombinant monoclonal antibody [BLR325M] (A700-325 lot 1) used at 1:1000. *Secondary:* HRP-conjugated goat anti-rabbit IgG (A120-101P). *Detection:* Chemiluminescence with an exposure time of 3 seconds. Lower Panel: Rabbit anti-Actin recombinant monoclonal antibody [BLR057F] (A700-057).



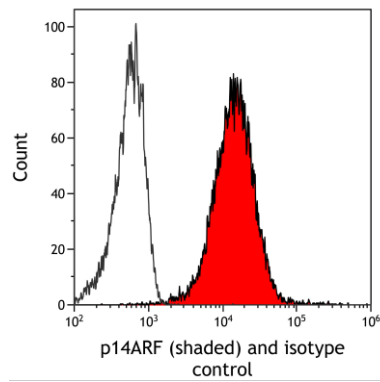
Detection of human p14ARF by western blot of immunoprecipitates. *Samples:* Whole cell lysate (1.0 mg per IP reaction; 20% of IP loaded) from HeLa cells prepared using NETN lysis buffer. *Antibodies:* Rabbit anti-p14ARF recombinant monoclonal antibody [BLR325M] (A700-325 lot 1) used for IP at 20 µl/mg lysate. p14ARF was also immunoprecipitated by p14ARF (A300-340A). For blotting immunoprecipitated p14ARF, A700-325 was used at 1:1000. *Detection:* Chemiluminescence with an exposure time of 1 second.



Detection of human p14ARF by immunohistochemistry. *Sample:* FFPE section of breast carcinoma. *Antibody:* Rabbit anti-p14ARF recombinant monoclonal antibody [BLR325M] (A700-325). *Secondary:* HRP-conjugated goat anti-rabbit IgG (A120-501P).



Detection of human p14ARF by immunocytochemistry. *Sample:* FFPE section of HeLa cells treated with etoposide. *Antibody:* Rabbit anti-p14ARF recombinant monoclonal antibody [BLR325M] (A700-325). *Secondary:* HRP-conjugated goat anti-rabbit IgG (A120-501P).



Detection of human p14ARF (shaded) in HeLa cells by flow cytometry. *Antibody:* Rabbit anti-p14ARF recombinant monoclonal antibody [BLR325M] (A700-325) or isotype control (unshaded). Fixed in 4% formaldehyde and permeabilized with 90% methanol. 1 μ l per 1×10^6 cells. *Secondary:* DyLight[®] 650-conjugated goat anti-rabbit IgG (A120-101D5).