

# CD138 Recombinant Monoclonal Antibody [BLR324M]

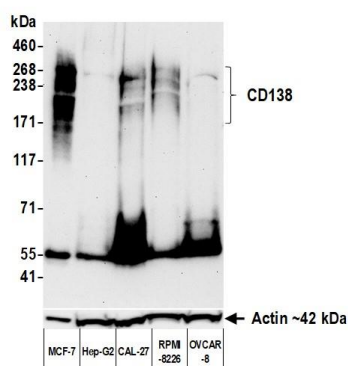
Rabbit Recombinant Monoclonal

Purified		RefSeq ID	NP_002988.4
Catalog No.	A700-324	Uniprot ID	P18827
Lot No.	1	GeneID	6382

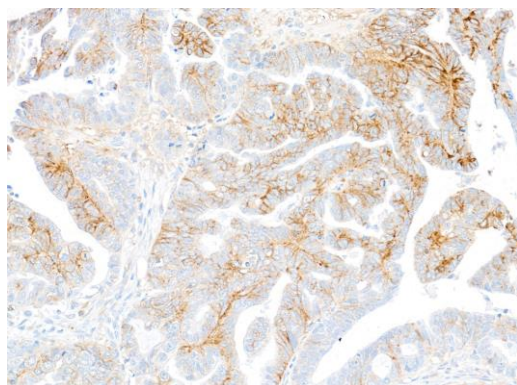
---

<b>APPLICATIONS</b>	WB, IP, IHC, ICC, Flow Cyt
<b>SPECIES REACTIVITY</b>	Human
<b>AMOUNT</b>	100 µl (50+ tests)
<b>CONCENTRATION</b>	500 µg/ml
<b>STORAGE/SHELF LIFE</b>	2 - 8°C / 1 year from date of receipt
<b>PHYSICAL STATE</b>	Liquid
<b>BUFFER</b>	Phosphate Buffered Saline (PBS) with 0.1% BSA and 0.09% Sodium Azide
<b>ISOTYPE</b>	IgG
<b>CLONE #</b>	BLR324M
<b>ORIGIN</b>	USA
<b>PRODUCTION PROCEDURES</b>	Recombinant antibody was purified from cell culture supernatant.  Immunogen was a recombinant protein representing the extracellular domain of human CD138 (residues 23-251, NP_002988.4).
<b>APPLICATIONS</b>	Centrifuge tube to remove product from lid. Optimal working dilutions should be determined experimentally by the investigator. Prepare working dilution immediately before use.  Western Blot 1:1,000 Immunoprecipitation 12 µl/mg lysate Immunohistochemistry 1:100 to 1:500. Epitope retrieval with citrate buffer pH 6.0 is recommended for FFPE tissue sections. Immunocytochemistry 1:100 to 1:500. Epitope retrieval with citrate buffer pH 6.0 is recommended for FFPE cell sections. Flow Cytometry Live or cells fixed in 4% formaldehyde and permeabilized with 90% methanol. 0.25 µl per 1 x 10 <sup>6</sup> cells.
<b>APPLICATION NOTES</b>	All western blot analysis is performed using 5% Milk-TBST for blocking and as antibody diluent. Primary antibody is incubated overnight.  Western blots of cell lysates are performed using Goat anti-Rabbit IgG Heavy and Light Chain Antibody (A120-101P).  Western blots of immunoprecipitates are performed using Goat anti-Rabbit Light Chain HRP Conjugate (A120-113P) with 5% Normal Pig Serum (S100-020) added to the blocking buffer.
<b>IHC HUMAN CONTROLS</b>	Colon Carcinoma, Ovarian Carcinoma, Tonsil, Cal-27 Cells, Hep-G2 Cells, RPMI-8226 Cells
<b>ADDITIONAL INFO</b>	<a href="https://www.fortislife.com/p/A700-324">https://www.fortislife.com/p/A700-324</a> Use the link above to view SDS, a current list of citations, and other product specific information.

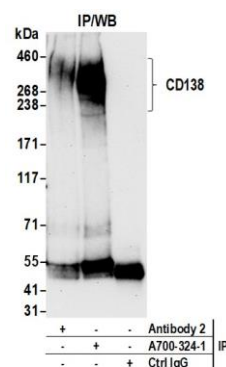
This document certifies that this product has met all of the quality control standards defined by Bethyl Laboratories, Inc.  
Michael Spencer, PhD Date: June 25, 2024



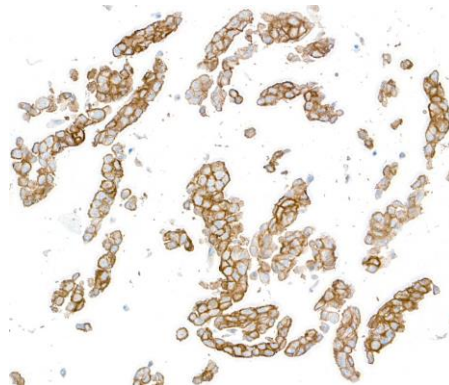
**Detection of human CD138 by western blot.** *Samples:* Whole cell lysate (50  $\mu$ g) from MCF-7 (5  $\mu$ g), Hep-G2, CAL-27, RPMI-8226, and OVCAR-8 cells prepared using NETN lysis buffer. *Antibody:* Rabbit anti-CD138 recombinant monoclonal antibody [BLR324M] (A700-324 lot 1) used at 1:1000. *Secondary:* HRP-conjugated goat anti-rabbit IgG (A120-101P). *Detection:* Chemiluminescence with an exposure time of 3 minutes. Lower Panel: Rabbit anti-Actin recombinant monoclonal antibody [BLR057F] (A700-057).



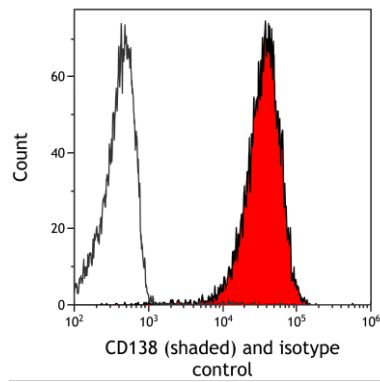
**Detection of human CD138 by immunohistochemistry.** *Sample:* FFPE section of ovarian carcinoma. *Antibody:* Rabbit anti-CD138 recombinant monoclonal antibody [BLR324M] (A700-324). *Secondary:* HRP-conjugated goat anti-rabbit IgG (A120-501P).



**Detection of human CD138 by western blot of immunoprecipitates.** *Samples:* Whole cell lysate (1.0 mg per IP reaction; 20% of IP loaded) from Hep-G2 cells prepared using NETN lysis buffer. *Antibodies:* Rabbit anti-CD138 recombinant monoclonal antibody [BLR324M] (A700-324 lot 1) used for IP at 12  $\mu$ l per reaction. CD138 was also immunoprecipitated by a second antibody against a different epitope of human CD138 (Antibody 2). For blotting immunoprecipitated CD138, A700-324 was used at 1:1000. *Detection:* Chemiluminescence with an exposure time of 3 minutes.



**Detection of human CD138 by immunocytochemistry.** *Sample:* FFPE section of Cal-27 cells. *Antibody:* Rabbit anti-CD138 recombinant monoclonal antibody [BLR324M] (A700-324). *Secondary:* HRP-conjugated goat anti-rabbit IgG (A120-501P).



**Detection of human CD138 (shaded) in HT-29 cells by flow cytometry.** *Antibody:* Rabbit anti-CD138 recombinant monoclonal antibody [BLR324M] (A700-324) or isotype control (unshaded). *Secondary:* DyLight® 650-conjugated goat anti-rabbit IgG (A120-101D5).