

# CD3E Monoclonal Antibody [BLR174J]

Rabbit Recombinant Monoclonal

Purified	Protein ID	NP_031674.1
Catalog No. A700-174	GeneID	12501
Lot No. A700-174-1		

<b>APPLICATIONS</b>	WB, IP, IHC, ICC, F
<b>SPECIES REACTIVITY</b>	Human, Mouse
<b>AMOUNT</b>	100 µl (50+ tests)
<b>CONCENTRATION</b>	500 µg/ml
<b>STORAGE/SHELF LIFE</b>	2 - 8° C / 1 year from date of receipt
<b>PHYSICAL STATE</b>	Liquid
<b>BUFFER</b>	Borate Buffered Saline (BBS) pH 8.2 with 0.1% BSA and 0.09% Sodium Azide
<b>ISOTYPE</b>	IgG
<b>CLONE #</b>	BLR174J
<b>ORIGIN</b>	USA

**PRODUCTION PROCEDURES** Recombinant antibody was purified from cell culture supernatant.

Immunogen was a peptide representing a region between residue 139 and the C-terminus (residue 189) of mouse T-cell surface glycoprotein CD3 epsilon using the numbering given in entry NP\_031674.1 (Gene ID 12501).

**APPLICATIONS** Centrifuge tube to remove product from lid. Optimal working dilutions should be determined experimentally by the investigator. Prepare working dilution immediately before use.

Western Blot	1:1,000
Immunoprecipitation	12 µl/1 mg lysate
Immunohistochemistry	1:100 to 1:500. Epitope retrieval with citrate buffer pH6.0 is recommended for FFPE tissue sections.
Immunocytochemistry	1:100 to 1:500. Epitope retrieval with citrate buffer pH6.0 is recommended for FFPE cell sections.
Flow Cytometry	Fixed in 4% formaldehyde and permeabilized with 90% methanol. 1 µl per 1 × 10 <sup>6</sup> cells.

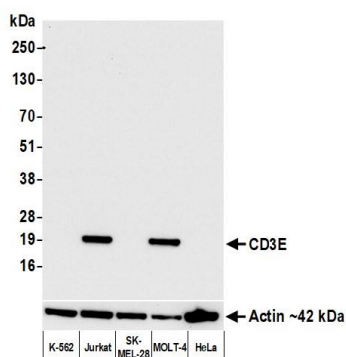
**IHC HUMAN CONTROLS** Breast Carcinoma, Skin Squamous Cell Carcinoma, Spleen, Tonsil, Jurkat Cells, MOLT-4 Cells

**IHC MOUSE CONTROLS** Spleen, Thymus, CTLL-2 Cells

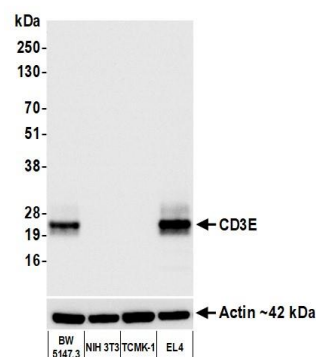
**ADDITIONAL INFO** <https://www.bethyl.com/product/A700-174>

Use the link above to view SDS, a current list of citations, and other product specific information.

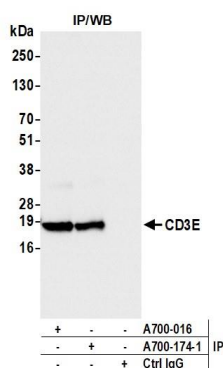
This document certifies that this product has met all of the quality control standards defined by Bethyl Laboratories, Inc.  
Michael Spencer, PhD Date: September 21, 2021



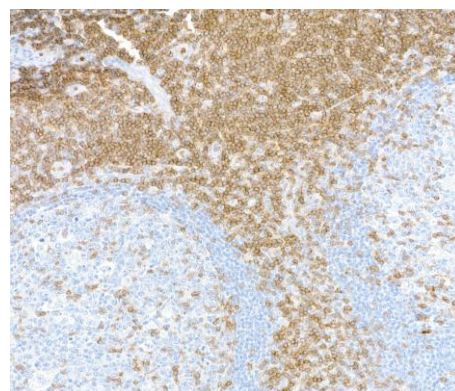
**Detection of human CD3E by western blot.** *Samples:* Whole cell lysate (10 µg) from K-562, Jurkat, SK-MEL-28, MOLT-4, and HeLa cells prepared using NETN lysis buffer. *Antibody:* Rabbit anti-CD3E recombinant monoclonal antibody [BLR174J] (A700-174 lot 1) used at 1:1000. *Secondary:* HRP-conjugated goat anti-rabbit IgG (A120-101P). Chemiluminescence with an exposure time of 3 seconds. Lower Panel: Rabbit anti-Actin recombinant monoclonal antibody [BLR057F] (A700-057).



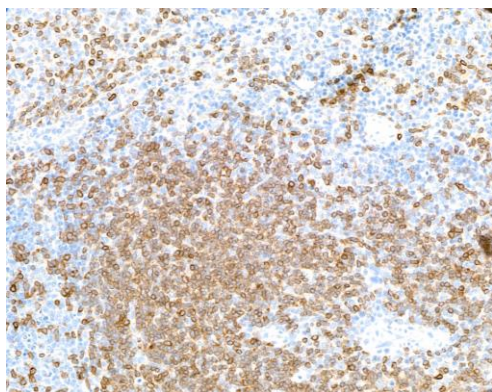
**Detection of mouse CD3E by western blot.** *Samples:* Whole cell lysate (10 µg) from BW5147.3, NIH 3T3, TCMK-1, and EL4 cells prepared using NETN lysis buffer. *Antibody:* Rabbit anti-CD3E recombinant monoclonal antibody [BLR174J] (A700-174 lot 1) used at 1:1000. *Secondary:* HRP-conjugated goat anti-rabbit IgG (A120-101P). Chemiluminescence with an exposure time of 1 second. Lower Panel: Rabbit anti-Actin recombinant monoclonal antibody [BLR057F] (A700-057).



**Detection of human CD3E by western blot of immunoprecipitates.** *Samples:* Whole cell lysate (1.0 mg per IP reaction; 20% of IP loaded) from Jurkat cells prepared using NETN lysis buffer. *Antibodies:* Rabbit anti-CD3E recombinant monoclonal antibody [BLR174J] (A700-174 lot 1) used for IP at 12 µl/mg lysate. CD3E was also immunoprecipitated by a second antibody against a different epitope of CD3E (A700-016). For blotting immunoprecipitated CD3E, A700-174 was used at 1:1000. Chemiluminescence with an exposure time of 1 second.



**Detection of human CD3E in FFPE tonsil by IHC.** *Antibody:* Rabbit anti-CD3E recombinant monoclonal antibody [BLR174J] (A700-174 lot 1). *Secondary:* HRP-conjugated goat anti-rabbit IgG (A120-501P). *Substrate:* DAB.



**Detection of mouse CD3E in FFPE mouse spleen by IHC.**

*Antibody:* Rabbit anti-CD3E recombinant monoclonal antibody [BLR174J] (A700-174 lot 1). *Secondary:* HRP-conjugated goat anti-rabbit IgG (A120-501P). *Substrate:* DAB.

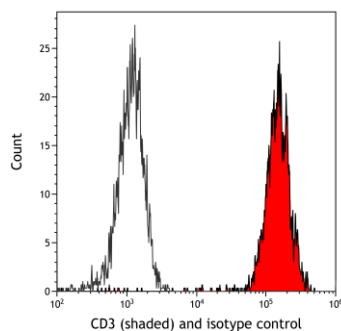


**Detection of human CD3E in FFPE MOLT-4 cells by ICC.**

*Antibody:* Rabbit anti-CD3E recombinant monoclonal antibody [BLR174J] (A700-174 lot 1). *Secondary:* HRP-conjugated goat anti-rabbit IgG (A120-501P). *Substrate:* DAB.



**Detection of mouse CD3E in FFPE mouse CTLL-2 cells by ICC.** *Antibody:* Rabbit anti-CD3E recombinant monoclonal antibody [BLR174J] (A700-174 lot 1). *Secondary:* HRP-conjugated goat anti-rabbit IgG (A120-501P). *Substrate:* DAB.



**Detection of human CD3 (shaded) in Jurkat cells by flow cytometry.** *Antibody:* Rabbit anti-CD3E recombinant monoclonal antibody [BLR174J] (A700-174 lot 1) or isotype control (unshaded). *Secondary:* DyLight® 488-conjugated goat anti-rabbit IgG (A120-101D2).