

CD8 alpha Monoclonal Antibody [BLR173J]

Rabbit Recombinant Monoclonal

Purified Protein ID P01731
Catalog No. A700-173 GeneID 12525
Lot No. A700-173-1



APPLICATIONS WB, IP, IHC
SPECIES REACTIVITY Mouse
AMOUNT 100 µl (50+ tests)
CONCENTRATION 500 µg/ml
STORAGE/SHELF LIFE 2 – 8° C / 1 year from date of receipt
PHYSICAL STATE Liquid
BUFFER Borate Buffered Saline (BBS) pH 8.2 with 0.1% BSA and 0.09% Sodium Azide
ISOTYPE IgG
CLONE # BLR173J
ORIGIN USA
PRODUCTION PROCEDURES Recombinant antibody was purified from cell culture supernatant.

Immunogen was a recombinant protein representing the extracellular domain of mouse T-cell surface glycoprotein CD8 alpha (residues 28-194, NP_001074579.1).

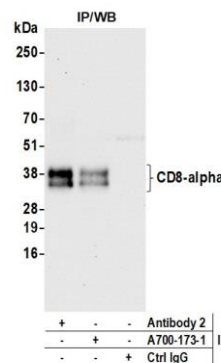
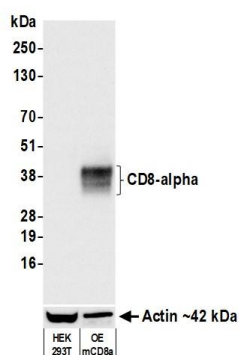
APPLICATIONS Centrifuge tube to remove product from lid. Optimal working dilutions should be determined experimentally by the investigator. Prepare working dilution immediately before use.

Western Blot 1:1000
Immunoprecipitation 12 µl/1 mg lysate
Immunohistochemistry 1:100 to 1:500. Epitope retrieval with citrate buffer pH6.0 is recommended for FFPE tissue sections.

IHC MOUSE CONTROLS Bone Marrow, Lung, Small Intestine, Spleen, Thymus

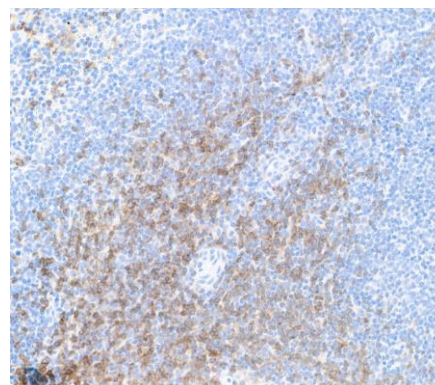
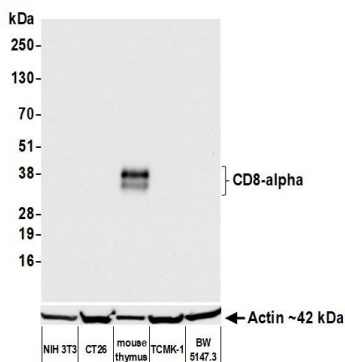
ADDITIONAL INFO <https://www.bethyl.com/product/A700-173>
Use the link above to view SDS, a current list of citations, and other product specific information.

This document certifies that this product has met all of the quality control standards defined by Bethyl Laboratories, Inc.
Brian McWilliams, PhD Date: June 30, 2021



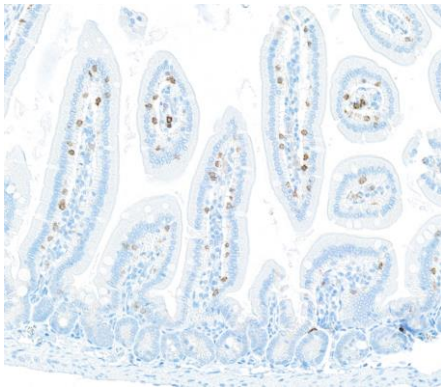
Detection of mouse CD8-alpha by western blot. Samples: Whole cell lysate (50 µg) from HEK293f and HEK293f over-expressing mouse CD8a cells prepared using NETN lysis buffer. **Antibody:** Rabbit anti-CD8-alpha recombinant monoclonal antibody [BLR173J] (A700-173 lot 1) used at 1:1000. **Secondary:** HRP-conjugated goat anti-rabbit IgG (A120-101P). Chemiluminescence with an exposure time of 1 second. Lower Panel: Rabbit anti-Actin recombinant monoclonal antibody [BLR057F] (A700-057).

Detection of mouse CD8-alpha by western blot of immunoprecipitates. Samples: Whole cell lysate (1.0 mg per IP reaction; 20% of IP loaded) from mouse thymus prepared using NETN lysis buffer. **Antibodies:** Rabbit anti-CD8-alpha recombinant monoclonal antibody [BLR173J] (A700-173 lot 1) used for IP at 12 µl/mg lysate. CD8-alpha was also immunoprecipitated by a second antibody against a different epitope of CD8-alpha (Antibody 2). For blotting immunoprecipitated CD8-alpha, A700-173 was used at 1:1000. Chemiluminescence with an exposure time of 10 seconds.

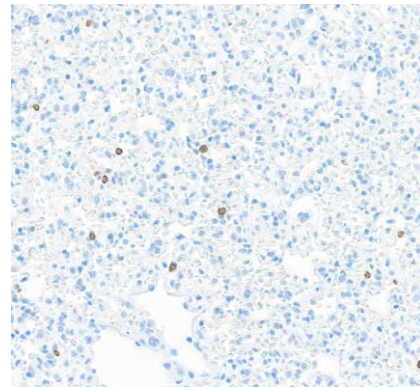


Detection of mouse CD8-alpha by western blot. Samples: Whole cell lysate (50 µg) from NIH 3T3, CT26, mouse thymus, TCMK-1, and BW5147.3 cells prepared using NETN lysis buffer. **Antibody:** Rabbit anti-CD8-alpha recombinant monoclonal antibody [BLR173J] (A700-173 lot 1) used at 1:1000. **Secondary:** HRP-conjugated goat anti-rabbit IgG (A120-101P). Chemiluminescence with an exposure time of 3 seconds. Lower Panel: Rabbit anti-Actin recombinant monoclonal antibody [BLR057F] (A700-057).

Detection of mouse CD8 alpha in FFPE mouse spleen by IHC. Antibody: Rabbit anti-CD8 alpha recombinant monoclonal antibody [BLR173J] (A700-173 lot 1). **Secondary:** HRP-conjugated goat anti-rabbit IgG (A120-501P). **Substrate:** DAB.



Detection of mouse CD8 alpha in FFPE mouse small intestine by IHC. *Antibody:* Rabbit anti-CD8 alpha recombinant monoclonal antibody [BLR173J] (A700-173 lot 1). *Secondary:* HRP-conjugated goat anti-rabbit IgG (A120-501P). *Substrate:* DAB.



Detection of mouse CD8 alpha in FFPE mouse lung by IHC. *Antibody:* Rabbit anti-CD8 alpha recombinant monoclonal antibody [BLR173J] (A700-173 lot 1). *Secondary:* HRP-conjugated goat anti-rabbit IgG (A120-501P). *Substrate:* DAB.