

# CGRP Monoclonal Antibody [BLR159]

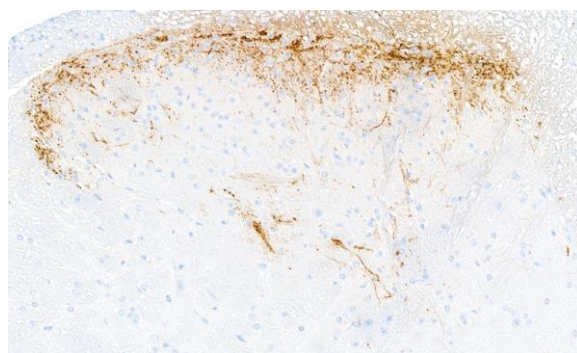
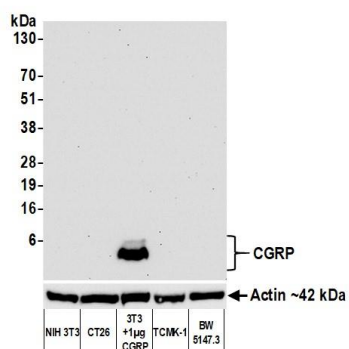
Rabbit Recombinant Monoclonal

Purified Protein ID NP\_001029126.1  
Catalog No. A700-159 GeneID 12310  
Lot No. A700-159-1



<b>APPLICATIONS</b>	WB, IHC
<b>SPECIES REACTIVITY</b>	Mouse
<b>AMOUNT</b>	100 µl (50+ tests)
<b>CONCENTRATION</b>	250 µg/ml
<b>STORAGE/SHELF LIFE</b>	2 – 8° C / 1 year from date of receipt
<b>PHYSICAL STATE</b>	Liquid
<b>BUFFER</b>	Borate Buffered Saline (BBS) pH 8.2 with 0.1% BSA and 0.09% Sodium Azide
<b>ISOTYPE</b>	IgG
<b>CLONE #</b>	BLR159J
<b>ORIGIN</b>	USA
<b>PRODUCTION PROCEDURES</b>	Recombinant antibody was purified from cell culture supernatant.  Immunogen was a peptide representing a region between residue 75 and 125 of mouse Calcitonin gene-related peptide 1 using the numbering given in entry NP_001029126.1 (Gene ID 12310).
<b>APPLICATIONS</b>	Centrifuge tube to remove product from lid. Optimal working dilutions should be determined experimentally by the investigator. Prepare working dilution immediately before use.  Western Blot 1:1,000  Immunohistochemistry 1:100 to 1:500. Epitope retrieval with citrate buffer pH6.0 is recommended for FFPE tissue sections.
<b>IHC MOUSE CONTROLS</b>	Spinal Cord
<b>ADDITIONAL INFO</b>	<a href="https://www.bethyl.com/product/A700-159">https://www.bethyl.com/product/A700-159</a> Use the link above to view SDS, a current list of citations, and other product specific information.

This document certifies that this product has met all of the quality control standards defined by Bethyl Laboratories, Inc.  
Brian McWilliams, PhD Date: April 30, 2021



**Detection of mouse CGRP by western blot.** *Samples:* Whole cell lysate (50 µg) from NIH 3T3, CT26, NIH 3T3 + 1 µg purified mouse CGRP, TCMK-1, and BW5147.3 cells prepared using NETN lysis buffer. *Antibody:* Rabbit anti-CGRP recombinant monoclonal antibody [BLR159J] (A700-159 lot 1) used at 1:1000. *Secondary:* HRP-conjugated goat anti-rabbit IgG (A120-101P). Chemiluminescence with an exposure time of 30 seconds. Lower Panel: Rabbit anti-Actin recombinant monoclonal antibody [BLR057F] (A700-057).

**Detection of mouse CGRP1 in FFPE mouse spinal cord by immunohistochemistry.** *Antibody:* Rabbit anti-CGRP1 recombinant monoclonal antibody [BLR159J] (A700-159 lot 1). *Secondary:* HRP-conjugated goat anti-rabbit IgG (A120-501P). *Substrate:* DAB.