

Bcl11a Recombinant Monoclonal Antibody [BLR151J]

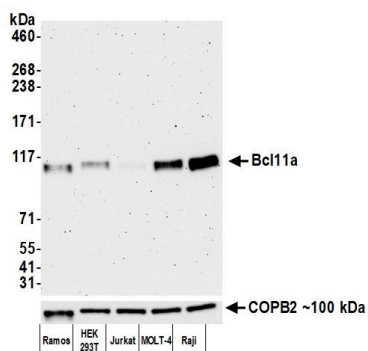
Rabbit Recombinant Monoclonal

| | | | |
|-------------|------------|------------|-------------|
| Purified | | Protein ID | NP_075044.2 |
| Catalog No. | A700-151 | GeneID | 53335 |
| Lot No. | A700-151-1 | | |

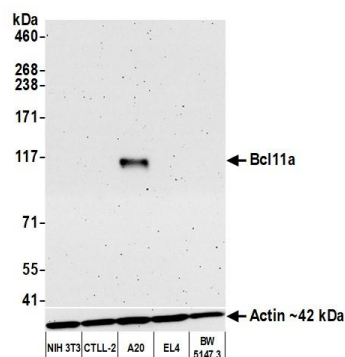


| | |
|------------------------------|---|
| APPLICATIONS | WB, IP |
| SPECIES REACTIVITY | Human, Mouse |
| AMOUNT | 100 µl (10 blots) |
| CONCENTRATION | 1000 µg/ml |
| STORAGE/SHELF LIFE | 2 – 8° C / 1 year from date of receipt |
| PHYSICAL STATE | Liquid |
| BUFFER | Phosphate Buffered Saline (PBS) containing 0.09% Sodium Azide |
| ISOTYPE | IgG |
| CLONE # | BLR151J |
| ORIGIN | USA |
| PRODUCTION PROCEDURES | Recombinant antibody was purified from cell culture supernatant. Immunogen was a peptide representing a region between residue 785 and the C-terminus (residue 835) of human B-cell lymphoma/leukemia 11A using the numbering given in entry NP_075044.2 (Gene ID 53335). |
| APPLICATIONS | Centrifuge tube to remove product from lid. Optimal working dilutions should be determined experimentally by the investigator. Prepare working dilution immediately before use. Western Blot 1:1,000 Immunoprecipitation 6 µl/1 mg lysate |
| ADDITIONAL INFO | https://www.bethyl.com/product/A700-151 Use the link above to view SDS, a current list of citations, and other product specific information. |

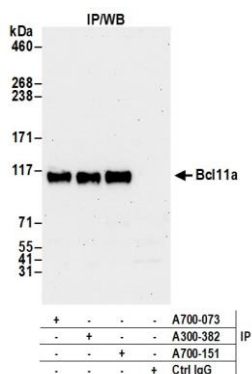
This document certifies that this product has met all of the quality control standards defined by Bethyl Laboratories, Inc.
Brian McWilliams, PhD Date: January 28, 2021



Detection of human Bcl11a by western blot. *Samples:* Whole cell lysate (10 µg) from Ramos, HEK293T, Jurkat, MOLT-4, and Raji cells prepared using NETN lysis buffer. *Antibody:* Rabbit anti-Bcl11a recombinant monoclonal antibody [BLR151J] (A700-151 lot 1) used at 1:1000. *Secondary:* HRP-conjugated goat anti-rabbit IgG (A120-101P). Chemiluminescence with an exposure time of 3 minutes. Lower Panel: Rabbit anti-COPB2 antibody (A304-523A).



Detection of mouse Bcl11a by western blot. *Samples:* Whole cell lysate (50 µg) from NIH 3T3, CTLL-2, A20, EL4, and BW5147.3 cells prepared using NETN lysis buffer. *Antibody:* Rabbit anti-Bcl11a recombinant monoclonal antibody [BLR151J] (A700-151 lot 1) used at 1:1000. *Secondary:* HRP-conjugated goat anti-rabbit IgG (A120-101P). Chemiluminescence with an exposure time of 3 minutes. Lower Panel: Rabbit anti-Actin antibody (A300-491A).



Detection of human Bcl11a by western blot of immunoprecipitates. *Samples:* Whole cell lysate (1.0 mg per IP reaction; 20% of IP loaded) from MOLT-4 cells prepared using NETN lysis buffer. *Antibodies:* Rabbit anti-Bcl11a recombinant monoclonal antibody [BLR151J] (A700-151 lot 1) used for IP at 6 µl/mg lysate. Bcl11a was also immunoprecipitated by other rabbit Bcl11a antibodies (A300-382A and A700-073). For blotting immunoprecipitated Bcl11a, A700-151 was used at 1:1000. Chemiluminescence with an exposure time of 30 seconds.