

CD11c Recombinant Monoclonal Antibody [BLR138H]

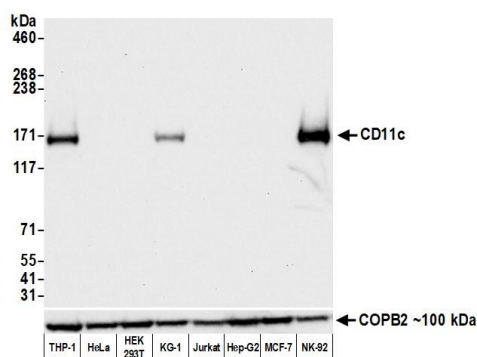
Rabbit Recombinant Monoclonal

Purified Protein ID NP_000878.2
Catalog No. A700-138 GeneID 3687
Lot No. A700-138-1

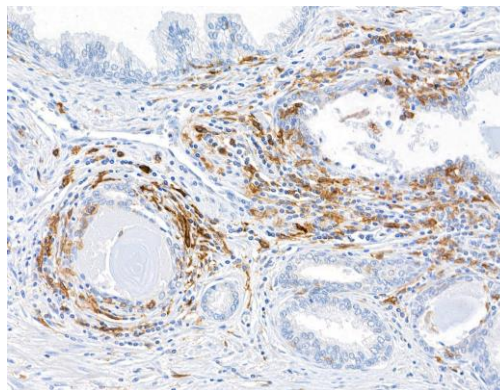


APPLICATIONS	WB, IHC, ICC
SPECIES REACTIVITY	Human
AMOUNT	100 µl (50+ tests)
CONCENTRATION	100 µg/ml
STORAGE/SHELF LIFE	2 – 8° C / 1 year from date of receipt
PHYSICAL STATE	Liquid
BUFFER	Borate Buffered Saline (BBS) pH 8.2 with 0.1% BSA and 0.09% Sodium Azide
ISOTYPE	IgG
CLONE #	BLR138H
ORIGIN	USA
PRODUCTION PROCEDURES	Recombinant antibody was purified from cell culture supernatant. Immunogen was a recombinant protein representing the extracellular domain of human Integrin alpha-X (aka CD11c, residues 112–355, NP_000878.2).
APPLICATIONS	Centrifuge tube to remove product from lid. Optimal working dilutions should be determined experimentally by the investigator. Prepare working dilution immediately before use. Western Blot 1:1,000 Immunohistochemistry 1:100 to 1:500. Epitope retrieval with citrate buffer pH6.0 is recommended for FFPE tissue sections. Immunocytochemistry 1:100 to 1:500. Epitope retrieval with citrate buffer pH6.0 is recommended for FFPE cell sections.
IHC HUMAN CONTROLS	Breast Carcinoma, Colon Carcinoma, Metastatic Lymph Node, Non-Hodgkins Lymphoma, Prostate Carcinoma, Tonsil, NK-92 cells, THP-1 cells
ADDITIONAL INFO	https://www.bethyl.com/product/A700-138 Use the link above to view SDS, a current list of citations, and other product specific information.

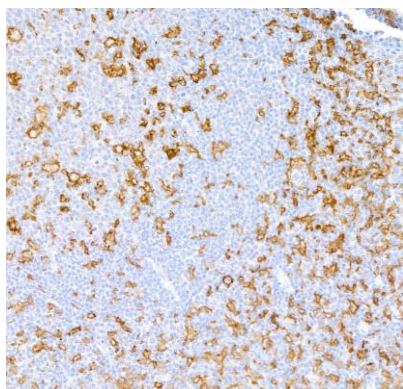
This document certifies that this product has met all of the quality control standards defined by Bethyl Laboratories, Inc.
Brian McWilliams, PhD Date: November 23, 2020



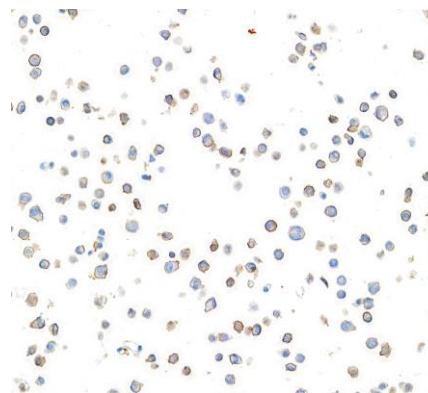
Detection of human CD11c by western blot. *Samples:* Whole cell lysate (50 μ g) from THP-1, HeLa, HEK293T, KG-1, Jurkat, Hep-G2, MCF-7, and NK-92 cells prepared using NETN lysis buffer. *Antibody:* Rabbit anti-CD11c recombinant monoclonal antibody [BLR138H] (A700-138 lot 1) used at 1:1000. *Secondary:* HRP-conjugated goat anti-rabbit IgG (A120-101P). Chemiluminescence with an exposure time of 10 seconds. Lower Panel: Rabbit anti-COPB2 antibody (A304-523A).



Detection of human CD11c in FFPE prostate carcinoma by immunohistochemistry. *Antibody:* Rabbit anti-CD11c recombinant monoclonal antibody [BLR138H] (A700-138 Lot 1). *Secondary:* HRP-conjugated goat anti-rabbit IgG (A120-501P). *Substrate:* DAB.



Detection of human CD11c in FFPE tonsil by immunohistochemistry. *Antibody:* Rabbit anti-CD11c recombinant monoclonal antibody [BLR138H] (A700-138 Lot 1). *Secondary:* HRP-conjugated goat anti-rabbit IgG (A120-501P). *Substrate:* DAB.



Detection of human CD11c in FFPE THP-1 cells treated with PMA by immunocytochemistry. *Antibody:* Rabbit anti-CD11c recombinant monoclonal antibody [BLR138H] (A700-138 Lot 1). *Secondary:* HRP-conjugated goat anti-rabbit IgG (A120-501P). *Substrate:* DAB.