

IDO1 Recombinant Monoclonal Antibody [BLR031F]

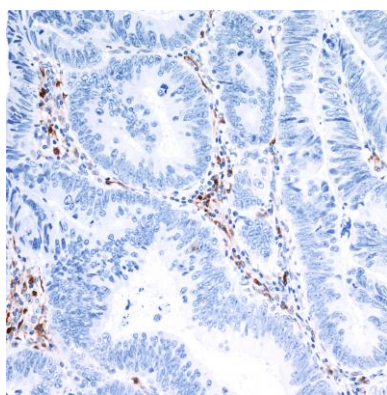
Rabbit Recombinant Monoclonal

Purified Protein ID NP_002155.1
Catalog No. A700-031 GeneID 3620
Lot No. A700-031-1

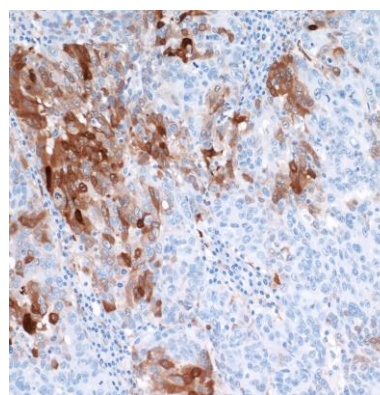


APPLICATIONS	WB, IHC, ICC, IHC-IF
SPECIES REACTIVITY	Human
AMOUNT	100 µl (50+ tests)
CONCENTRATION	50 µg/ml
STORAGE/SHELF LIFE	2 - 8° C / 1 year from date of receipt
PHYSICAL STATE	Liquid
BUFFER	Borate Buffered Saline (BBS) pH 8.2 with 0.1% BSA and 0.09% Sodium Azide
ISOTYPE	IgG
CLONE #	BLR031F
ORIGIN	USA
PRODUCTION PROCEDURES	Recombinant antibody was purified from cell culture supernatant. Immunogen was a recombinant protein representing human Indoleamine 2,3-dioxygenase 1 (IDO1, residues 1-403, NP_002155.1).
APPLICATIONS	Centrifuge tube to remove product from lid. Optimal working dilutions should be determined experimentally by the investigator. Prepare working dilution immediately before use. Western Blot 1:1000 Immunohistochemistry 1:100 to 1:500. Epitope retrieval with citrate buffer pH6.0 is recommended for FFPE tissue sections. Immunocytochemistry 1:100 to 1:500. Epitope retrieval with citrate buffer pH6.0 is recommended for FFPE cell sections. Immunofluorescence (IHC) 1:100 to 1:500. Epitope retrieval with citrate buffer pH6.0 is recommended for FFPE tissue sections.
IHC HUMAN CONTROLS	Colon Carcinoma, Ovarian Carcinoma, Tonsil, A-549 Cells
ADDITIONAL INFO	https://www.bethyl.com/product/A700-031 Use the link above to view SDS, a current list of citations, and other product specific information.

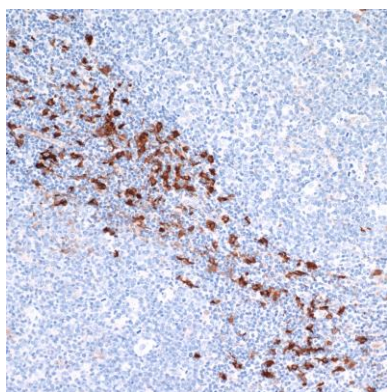
This document certifies that this product has met all of the quality control standards defined by Bethyl Laboratories, Inc.
Eric McIntush, PhD | Chief Scientific Officer Date: June 21, 2019



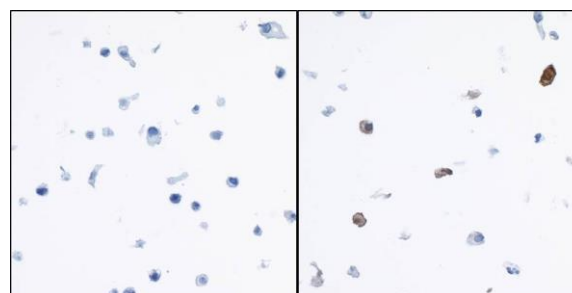
Detection of human IDO1 by immunohistochemistry.
Sample: FFPE section of colon carcinoma. *Antibody:* Rabbit anti-IDO1 recombinant monoclonal antibody [BLR031F] (A700-031 lot 1) used at 1:250. *Secondary:* HRP-conjugated goat anti-rabbit IgG (A120-501P). *Substrate:* DAB.



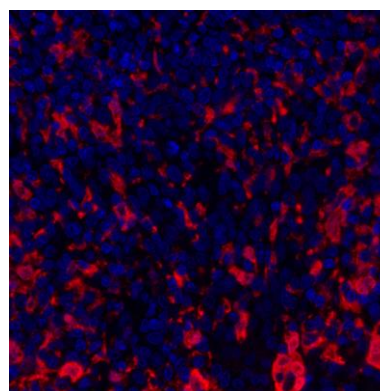
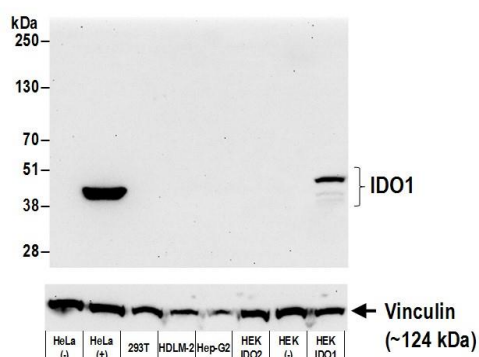
Detection of human IDO1 by immunohistochemistry.
Sample: FFPE section of ovarian carcinoma. *Antibody:* Rabbit anti-IDO1 recombinant monoclonal antibody [BLR031F] (A700-031 lot 1) used at 1:250. *Secondary:* HRP-conjugated goat anti-rabbit IgG (A120-501P). *Substrate:* DAB.



Detection of human IDO1 by immunohistochemistry.
Sample: FFPE section of tonsil. *Antibody:* Rabbit anti-IDO1 recombinant monoclonal antibody [BLR031F] (A700-031 lot 1) used at 1:250. *Secondary:* HRP-conjugated goat anti-rabbit IgG (A120-501P). *Substrate:* DAB.



Detection of human IDO1 by immunocytochemistry.
Sample: FFPE section of A-549 cells, untreated (left) or treated with human Interferon- γ (right). *Antibody:* Rabbit anti-IDO1 recombinant monoclonal antibody [BLR031F] (A700-031 lot 1) used at 1:250. *Secondary:* HRP-conjugated goat anti-rabbit IgG (A120-501P). *Substrate:* DAB.



Detection of human IDO1 by western blot. *Samples:* Whole cell lysate (50 µg) from HeLa treated with IFN-gamma (+) or mock treated (-), HEK293T, HDLM-2, Hep-G2, IDO2 over-expressing HEK, untransfected HEK, and IDO1 over-expressing HEK cells prepared using NETN lysis buffer. *Antibody:* Rabbit anti-IDO1 recombinant monoclonal antibody [BLR031F] (A700-031 lot 1) used at 1:1000. *Secondary:* HRP-conjugated goat anti-rabbit IgG (A120-101P). Chemiluminescence with an exposure time of 30 seconds. Lower Panel: Rabbit anti-Vinculin (A302-535A).

Detection of human IDO1 (red) by immunohistochemistry. *Sample:* FFPE section of human skin carcinoma. *Antibody:* Rabbit anti-IDO1 recombinant monoclonal antibody [BLR031F] (A700-031 lot 1) used at 1:250. *Secondary:* HRP-conjugated goat anti-rabbit IgG (A120-501P). *Substrate:* Opal™. *Counterstain:* DAPI (blue).