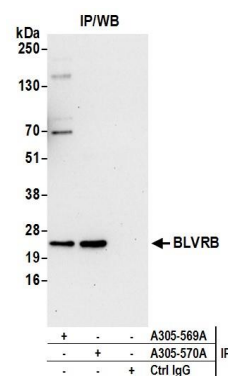


Detection of human BLVRB by western blot. *Samples:* Whole cell lysate (50 μ g) from HeLa, HEK293T, and Jurkat cells prepared using NETN lysis buffer. *Antibody:* Affinity purified rabbit anti-BLVRB antibody A305-569A (lot A305-569A-1) used for WB at 0.1 μ g/ml. *Detection:* Chemiluminescence with an exposure time of 30 seconds.



Detection of human BLVRB by western blot of immunoprecipitates. *Samples:* Whole cell lysate (0.5 or 1.0 mg per IP reaction; 20% of IP loaded) from 293T cells prepared using NETN lysis buffer. *Antibodies:* Affinity purified rabbit anti-BLVRB antibody A305-569A (lot A305-569A-1) used for IP at 6 μ g per reaction. BLVRB was also immunoprecipitated by rabbit anti-BLVRB antibody A305-570A. For blotting immunoprecipitated BLVRB, A305-569A was used at 1 μ g/ml. *Detection:* Chemiluminescence with an exposure time of 30 seconds.