

POLR1A/RPA194 Antibody

Rabbit Polyclonal

Antigen Affinity Purified Protein ID O95602.2
Catalog No. A304-846A GeneID 25885
Lot No. A304-846A-1



APPLICATIONS WB, IP
SPECIES REACTIVITY Human
AMOUNT 100 µl
CONCENTRATION 1000 µg/ml
STORAGE/SHELF LIFE 2 - 8° C / 1 year from date of receipt
PHYSICAL STATE Liquid
BUFFER Tris-citrate/phosphate buffer, pH 7 to 8 containing 0.09% Sodium Azide
ISOTYPE IgG
ORIGIN USA
PRODUCTION PROCEDURES Antibody was affinity purified using an epitope specific to POLR1A/RPA194 immobilized on solid support.

The epitope recognized by A304-846A maps to a region between residue 1425 to 1475 of human DNA-directed RNA polymerase I subunit RPA1 using the numbering given in entry O95602.2 (GeneID 25885).

Antibody concentration was determined by extinction coefficient: absorbance at 280 nm of 1.4 equals 1.0 mg of IgG.

APPLICATIONS Centrifuge tube to remove product from lid. Optimal working dilutions should be determined experimentally by the investigator. Prepare working dilution immediately before use.

Western Blot 1:2,000 - 1:10,000

Immunoprecipitation 2 - 10 µg/mg lysate

APPLICATION NOTES Western blot of immunoprecipitates performed using Normal Pig Serum (Cat. No. S100-020), Goat anti-Rabbit Light Chain HRP Conjugate (Cat. No. A120-113P) and 4-8% SDS-PAGE (link to IP-western blot protocol in Additional Info section below).

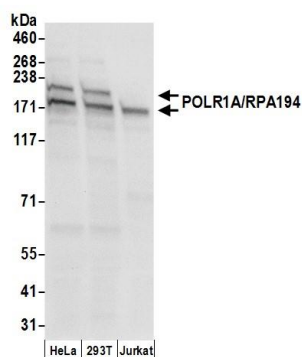
Western blot of lysates performed using standard western blot reagents and 4-8% SDS-PAGE.

ADDITIONAL INFO <https://www.bethyl.com/product/A304-846A>

Use the link above to view SDS, a current list of citations, and other product specific information.

IP-western blot protocol: https://www.bethyl.com/content/protocol_IP_WB

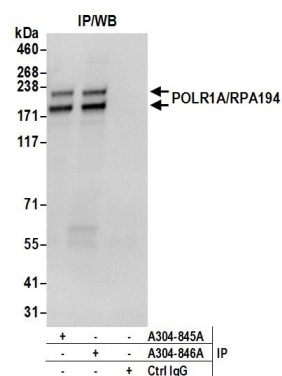
This document certifies that this product has met all of the quality control standards defined by Bethyl Laboratories, Inc.
Eric McIntush, PhD | Chief Scientific Officer Date: June 21, 2019



Detection of human POLR1A/RPA194 by western blot.

Samples: Whole cell lysate (50 µg) from HeLa, HEK293T, and Jurkat cells prepared using NETN lysis buffer.

Antibody: Affinity purified rabbit anti-POLR1A/RPA194 antibody A304-846A (lot A304-846A-1) used for WB at 0.1 µg/ml. *Detection:* Chemiluminescence with an exposure time of 3 seconds.



Detection of human POLR1A/RPA194 by western blot of immunoprecipitates. *Samples:* Whole cell lysate (0.5 or 1.0 mg per IP reaction; 20% of IP loaded) from HeLa cells prepared using NETN lysis buffer. *Antibodies:* Affinity purified rabbit anti-POLR1A/RPA194 antibody A304-846A (lot A304-846A-1) used for IP at 6 µg per reaction. POLR1A/RPA194 was also immunoprecipitated by rabbit anti-POLR1A/RPA194 antibody A304-845A. For blotting immunoprecipitated POLR1A/RPA194, A304-846A was used at 0.4 µg/ml. *Detection:* Chemiluminescence with an exposure time of 3 seconds.