

ARHGDI2/D4-GDI/RhoGDI2 Antibody

Rabbit Polyclonal

Antigen Affinity Purified	Protein ID	P52566.1
Catalog No. A304-815A	GeneID	397
Lot No. A304-815A-2		

APPLICATIONS	WB, IP, IHC
SPECIES REACTIVITY	Human
AMOUNT	100 µl
CONCENTRATION	1000 µg/ml
STORAGE/SHELF LIFE	2 – 8°C / 1 year from date of receipt
PHYSICAL STATE	Liquid
BUFFER	Tris-citrate/phosphate buffer, pH 7 to 8 containing 0.09% Sodium Azide
ISOTYPE	IgG
ORIGIN	USA
PRODUCTION PROCEDURES	Antibody was affinity purified using an epitope specific to ARHGDI2/D4-GDI/RhoGDI2 immobilized on solid support.

The epitope recognized by A304-815A maps to a region between residue 50 to 100 of human Rho GDP dissociation inhibitor (GDI) beta using the numbering given in entry P52566.1 (GeneID 397).

Antibody concentration was determined by extinction coefficient: absorbance at 280 nm of 1.4 equals 1.0 mg of IgG.

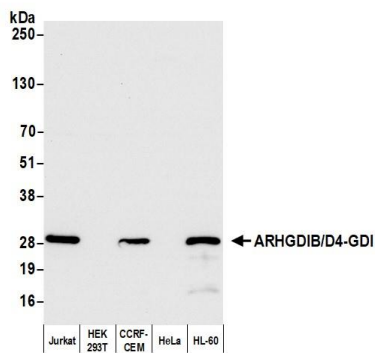
APPLICATIONS Centrifuge tube to remove product from lid. Optimal working dilutions should be determined experimentally by the investigator. Prepare working dilution immediately before use.

Western Blot	1:2,000 – 1:10,000
Immunoprecipitation	2 – 10 µg/mg lysate
Immunohistochemistry	1:1,000 to 1:5,000. Epitope retrieval with citrate buffer pH6.0 is recommended for FFPE tissue sections.

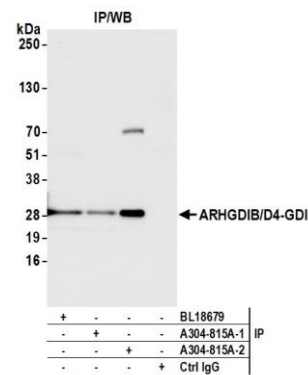
IHC HUMAN CONTROLS Breast Carcinoma, Colon Carcinoma, Linitis Plastica Stomach Cancer, Ovarian Carcinoma

ADDITIONAL INFO <https://www.bethyl.com/product/A304-815A>
Use the link above to view SDS, a current list of citations, and other product specific information.
IP-western blot protocol: https://www.bethyl.com/content/protocol_IP_WB

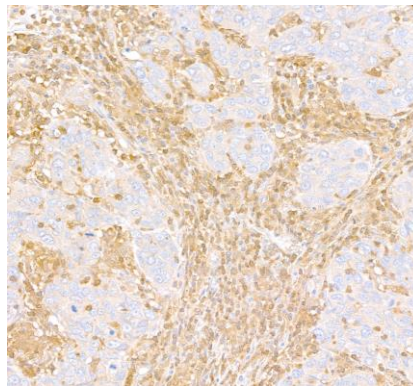
This document certifies that this product has met all of the quality control standards defined by Bethyl Laboratories, Inc.
Michael Spencer, PhD Date: October 28, 2021



Detection of human ARHGDI2/D4-GDI/RhoGDI2 by western blot. *Samples:* Whole cell lysate (10 µg) from Jurkat, HEK293T, CCRF-CEM, HeLa, and HL-60 cells prepared using NETN lysis buffer. *Antibody:* Affinity purified rabbit anti-ARHGDI2/D4-GDI/RhoGDI2 antibody (A304-815A lot 2) used for WB at 0.1 µg/ml. *Detection:* Chemiluminescence with an exposure time of 3 seconds.



Detection of human ARHGDI2/D4-GDI by western blot of immunoprecipitates. *Samples:* Whole cell lysate (1.0 mg per IP reaction; 20% of IP loaded) from Jurkat cells prepared using NETN lysis buffer. *Antibodies:* Affinity purified rabbit anti-ARHGDI2/D4-GDI antibody (A304-815A lot 2) used for IP at 6 µg per reaction. ARHGDI2/D4-GDI was also immunoprecipitated by a previous lot of this antibody (A304-815A lot 1) and rabbit anti-ARHGDI2/D4-GDI antibody Brother. For blotting immunoprecipitated ARHGDI2/D4-GDI, A304-815A was used at 0.1 µg/ml. *Detection:* Chemiluminescence with an exposure time of 3 seconds.



Detection of human ARHGDI2/D4-GDI by immunohistochemistry. *Sample:* FFPE section of human breast carcinoma inflammatory cell infiltrate. *Antibody:* Affinity purified rabbit anti-ARHGDI2/D4-GDI (A304-815A Lot 2) used at a dilution of 1:5,000 0.2 µg/ml