

CCT7 Antibody

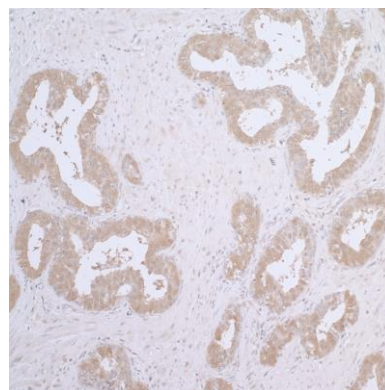
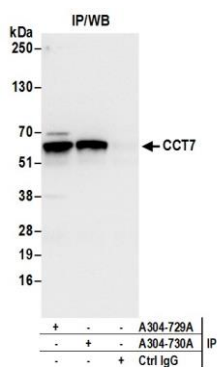
Rabbit Polyclonal

Antigen Affinity Purified Protein ID NP_006420.1
Catalog No. A304-729A GeneID 10574
Lot No. A304-729A-1



APPLICATIONS	IP, IHC
SPECIES REACTIVITY	Human
PRESUMED REACTIVITY	Based on 100% sequence identity, this antibody is predicted to react with Mouse, Chicken, Bovine and Orangutan
AMOUNT	100 µl
CONCENTRATION	1000 µg/ml
STORAGE/SHELF LIFE	2 – 8° C / 1 year from date of receipt
PHYSICAL STATE	Liquid
BUFFER	Tris-citrate/phosphate buffer, pH 7 to 8 containing 0.09% Sodium Azide
ISOTYPE	IgG
ORIGIN	USA
PRODUCTION PROCEDURES	Antibody was affinity purified using an epitope specific to CCT7 immobilized on solid support. The epitope recognized by A304-729A maps to a region between residue 1 to 50 of human Chaperonin Containing Tcp1, Subunit 7 using the numbering given in entry NP_006420.1 (GeneID 10574). Antibody concentration was determined by extinction coefficient: absorbance at 280 nm of 1.4 equals 1.0 mg of IgG.
APPLICATIONS	Centrifuge tube to remove product from lid. Optimal working dilutions should be determined experimentally by the investigator. Prepare working dilution immediately before use. Western Blot Not recommended. Use rabbit anti-CCT7 antibody A304-730A. Immunoprecipitation 2 – 10 µg/mg lysate Immunohistochemistry 1:2,000 – 1:10,000. Epitope retrieval with citrate buffer pH 6.0 is recommended for FFPE tissue sections.
APPLICATION NOTES	Western blot of immunoprecipitates performed using Normal Pig Serum (Cat. No. S100-020), Goat anti-Rabbit Light Chain HRP Conjugate (Cat. No. A120-113P) and 4-20% SDS-PAGE (link to IP-western blot protocol in Additional Info section below).
IHC HUMAN CONTROLS	Prostate Carcinoma
ADDITIONAL INFO	https://www.bethyl.com/product/A304-729A Use the link above to view SDS, a current list of citations, and other product specific information. IP-western blot protocol: https://www.bethyl.com/content/protocol_IP_WB

This document certifies that this product has met all of the quality control standards defined by Bethyl Laboratories, Inc.
Eric McIntush, PhD | Chief Scientific Officer Date: June 21, 2019



Detection of human CCT7 by western blot of immunoprecipitates. *Samples:* Whole cell lysate (0.5 or 1.0 mg per IP reaction; 20% of IP loaded) from 293T cells prepared using NETN lysis buffer. *Antibodies:* Affinity purified rabbit anti-CCT7 antibody A304-729A (lot A304-729A-1) used for IP at 6 µg per reaction. CCT7 was also immunoprecipitated by rabbit anti-CCT7 antibody A304-730A. For blotting immunoprecipitated CCT7, A304-729A was used at 0.4 µg/ml. *Detection:* Chemiluminescence with an exposure time of 3 seconds.

Detection of human CCT7 by immunohistochemistry. *Sample:* FFPE section of human prostate carcinoma. *Antibody:* Affinity purified rabbit anti-CCT7 (Cat. No. A304-729A Lot1) used at a dilution of 1:5,000 (0.2 µg/ml). *Detection:* DAB. *Counterstain:* IHC Hematoxylin (blue).