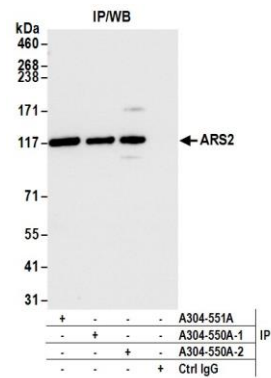


Detection of human and mouse ARS2 by western blot.

Samples: Whole cell lysate (50 µg) from HeLa, Jurkat, HEK293T, TCMK-1, and NIH 3T3 cells prepared using NETN lysis buffer. **Antibody:** Affinity purified Rabbit anti-ARS2 antibody A304-550A (lot A304-550A-3) used for WB at 0.04 µg/ml. **Detection:** Chemiluminescence with an exposure time of 3 seconds.



Detection of human ARS2 by western blot of immunoprecipitates.

Samples: Whole cell lysate (1.0 mg per IP reaction; 20% of IP loaded) from HeLa cells prepared using NETN lysis buffer. **Antibodies:** Affinity purified rabbit anti-ARS2 antibody A304-550A (lot A304-550A-3) used for IP at 6 µg per reaction. ARS2 was also immunoprecipitated by a previous lot of this antibody (lot A304-550A-1) and rabbit anti-ARS2 antibody A304-551A. For blotting immunoprecipitated ARS2, A304-550A was used at 0.04 µg/ml. Chemiluminescence with an exposure time of 3 seconds.