

# IDH1 Antibody

Rabbit Polyclonal

Antigen Affinity Purified

Protein ID NP\_005887.2

Catalog No. A304-162A

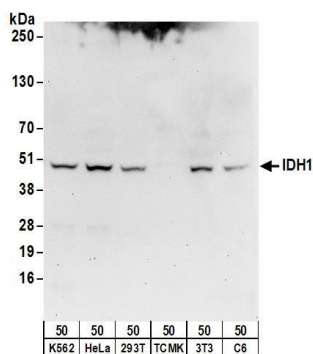
GeneID 3417

Lot No. A304-162A-1



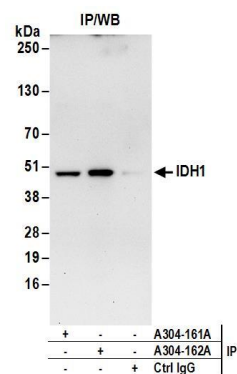
<b>APPLICATIONS</b>	WB, IP
<b>SPECIES REACTIVITY</b>	Human, Mouse, Rat
<b>PRESUMED REACTIVITY</b>	Based on 100% sequence identity, this antibody is predicted to react with Orangutan
<b>AMOUNT</b>	100 µl
<b>CONCENTRATION</b>	1000 µg/ml
<b>STORAGE/SHELF LIFE</b>	2 - 8° C / 1 year from date of receipt
<b>PHYSICAL STATE</b>	Liquid
<b>BUFFER</b>	Tris-citrate/phosphate buffer, pH 7 to 8 containing 0.09% Sodium Azide
<b>ISOTYPE</b>	IgG
<b>ORIGIN</b>	USA
<b>PRODUCTION PROCEDURES</b>	<p>Antibody was affinity purified using an epitope specific to IDH1 immobilized on solid support.</p> <p>The epitope recognized by A304-162A maps to a region between residue 364 to 414 of human Isocitrate Dehydrogenase 1 using the numbering given in entry NP_005887.2 (GeneID 3417).</p> <p>Antibody concentration was determined by extinction coefficient: absorbance at 280 nm of 1.4 equals 1.0 mg of IgG.</p>
<b>APPLICATIONS</b>	<p>Centrifuge tube to remove product from lid. Optimal working dilutions should be determined experimentally by the investigator. Prepare working dilution immediately before use.</p> <p>Western Blot                      1:500 - 1:2,500</p> <p>Immunoprecipitation        2 - 10 µg/mg lysate</p>
<b>APPLICATION NOTES</b>	<p>Western blot of immunoprecipitates performed using Normal Pig Serum (Cat. No. S100-020), Goat anti-Rabbit Light Chain HRP Conjugate (Cat. No. A120-113P) and 4-20% SDS-PAGE (link to IP-western blot protocol in Additional Info section below).</p> <p>Western blot of lysates performed using standard western blot reagents and 4-20% SDS-PAGE.</p>
<b>ADDITIONAL INFO</b>	<p><a href="https://www.bethyl.com/product/A304-162A">https://www.bethyl.com/product/A304-162A</a></p> <p>Use the link above to view SDS, a current list of citations, and other product specific information.</p> <p>IP-western blot protocol: <a href="https://www.bethyl.com/content/protocol_IP_WB">https://www.bethyl.com/content/protocol_IP_WB</a></p>

This document certifies that this product has met all of the quality control standards defined by Bethyl Laboratories, Inc.  
Eric McIntush, PhD | Chief Scientific Officer Date: June 21, 2019



#### Detection of human, mouse and rat IDH1 by western blot.

**Samples:** Whole cell lysate (50  $\mu$ g) from K-562, HeLa, HEK293T, mouse TCMK-1, mouse NIH 3T3, and rat C6 cells. **Antibodies:** Affinity purified rabbit anti-IDH1 antibody A304-162A (lot A304-162A-1) used for WB at 1  $\mu$ g/ml. **Detection:** Chemiluminescence with an exposure time of 30 seconds.



#### Detection of human IDH1 by western blot of immunoprecipitates.

**Samples:** Whole cell lysate (1 mg for IP; 20% of IP loaded) from Jurkat cells. **Antibodies:** Affinity purified rabbit anti-IDH1 antibody A304-162A (lot A304-162A-1) used for IP at 6  $\mu$ g/mg lysate. IDH1 was also immunoprecipitated by rabbit anti-IDH1 antibody A304-161A. For blotting immunoprecipitated IDH1, A304-162A was used at 1  $\mu$ g/ml. **Detection:** Chemiluminescence with an exposure time of 30 seconds.