

# ZEB2/SIP Antibody

Rabbit Polyclonal

Antigen Affinity Purified

Protein ID NP\_055610.1

Catalog No. A302-473A

GeneID 9839

Lot No. A302-473A-1



<b>APPLICATIONS</b>	IP, IHC
<b>SPECIES REACTIVITY</b>	Human
<b>AMOUNT</b>	100 µl
<b>CONCENTRATION</b>	1000 µg/ml
<b>STORAGE/SHELF LIFE</b>	2 – 8° C / 1 year from date of receipt
<b>PHYSICAL STATE</b>	Liquid
<b>BUFFER</b>	Tris-citrate/phosphate buffer, pH 7 to 8 containing 0.09% Sodium Azide
<b>ISOTYPE</b>	IgG
<b>ORIGIN</b>	USA
<b>PRODUCTION PROCEDURES</b>	Antibody was affinity purified using an epitope specific to ZEB2/SIP immobilized on solid support.

The epitope recognized by A302-473A maps to a region between residue 750 and 800 of human Smad interacting-protein 1 using the numbering given in entry NP\_055610.1 (GeneID 9839).

Antibody concentration was determined by extinction coefficient: absorbance at 280 nm of 1.4 equals 1.0 mg of IgG.

**APPLICATIONS** Centrifuge tube to remove product from lid. Optimal working dilutions should be determined experimentally by the investigator. Prepare working dilution immediately before use.

Western Blot Not recommended. Use rabbit anti-ZEB2/SIP antibody A302-474A.

Immunoprecipitation 2 – 5 µg/mg lysate

Immunohistochemistry 1:500 – 1:2,000. Epitope retrieval with citrate buffer pH 6.0 is recommended for FFPE tissue sections.

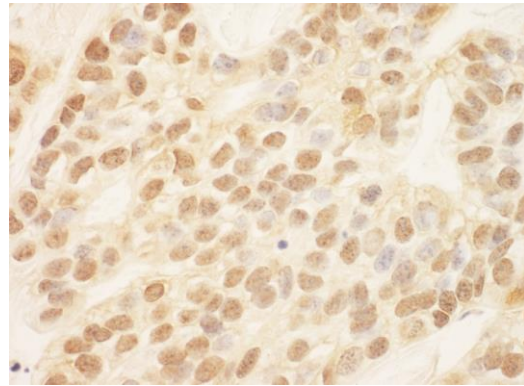
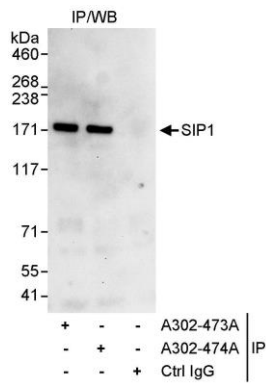
**IHC HUMAN CONTROLS** Breast Carcinoma, Colon Carcinoma

**ADDITIONAL INFO** <https://www.bethyl.com/product/A302-473A>

Use the link above to view SDS, a current list of citations, and other product specific information.

IP-western blot protocol: [https://www.bethyl.com/content/protocol\\_IP\\_WB](https://www.bethyl.com/content/protocol_IP_WB)

This document certifies that this product has met all of the quality control standards defined by Bethyl Laboratories, Inc.  
Eric McIntush, PhD | Chief Scientific Officer Date: June 29, 2020



**Detection of human ZEB2/SIP by western blot of immunoprecipitates.** *Samples:* Whole cell lysate (1 mg for IP, 20% of IP loaded) from HeLa cells. *Antibodies:* Affinity purified rabbit anti-ZEB2/SIP antibody A302-473A used for IP at 3  $\mu\text{g}/\text{mg}$  lysate. ZEB2/SIP was also immunoprecipitated by rabbit anti-ZEB2/SIP antibody A302-474A, which recognizes a downstream epitope. For blotting immunoprecipitated ZEB2/SIP, A302-474A was used at 1  $\mu\text{g}/\text{ml}$ . *Detection:* Chemiluminescence with an exposure time of 30 seconds.

**Detection of human ZEB2/SIP by immunohistochemistry.** *Sample:* FFPE section of human breast carcinoma. *Antibody:* Affinity purified rabbit anti-ZEB2/SIP (Cat. No. A302-473A Lot1) used at a dilution of 1:1,000 (1  $\mu\text{g}/\text{ml}$ ). *Detection:* DAB