

BCR Antibody

Rabbit Polyclonal

Antigen Affinity Purified Protein ID NP_004318.3

Catalog No. A302-056A GeneID 613

Lot No. A302-056A-1



APPLICATIONS	IP, ICC-IF, F
SPECIES REACTIVITY	Human
AMOUNT	100 µl
CONCENTRATION	1000 µg/ml
STORAGE/SHELF LIFE	2 – 8° C / 1 year from date of receipt
PHYSICAL STATE	Liquid
BUFFER	Tris-citrate/phosphate buffer, pH 7 to 8 containing 0.09% Sodium Azide
ISOTYPE	IgG
ORIGIN	USA
PRODUCTION PROCEDURES	Antibody was affinity purified using an epitope specific to BCR immobilized on solid support. The epitope recognized by A302-056A maps to a region between residue 50 and 100 of human breakpoint cluster region using the numbering given in entry NP_004318.3 (GeneID 613). Immunoglobulin concentration was determined by extinction coefficient: absorbance at 280 nm of 1.4 equals 1.0 mg of IgG.

APPLICATIONS Centrifuge tube to remove product from lid. Optimal working dilutions should be determined experimentally by the investigator. Prepare working dilution immediately before use.

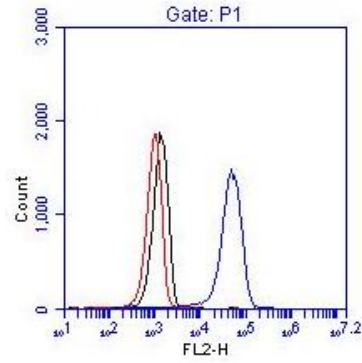
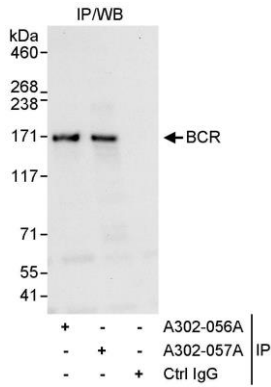
Western Blot	Not recommended. Use rabbit anti-BCR antibody A302-057A.
Immunoprecipitation	10 µg/mg lysate
Immunofluorescence (ICC)	1:500 – 1:2,000
Flow Cytometry	0.25 µg per 1 X 10 ⁶ cells in a 150 µl volume

APPLICATION NOTES Western blot of immunoprecipitates performed using Normal Pig Serum (Cat. No. S100-020), Goat anti-Rabbit Light Chain HRP Conjugate (Cat. No. A120-113P) and 4-8% SDS-PAGE (link to IP-western blot protocol in Additional Info section below).

IHC HUMAN CONTROLS K-562 Cells

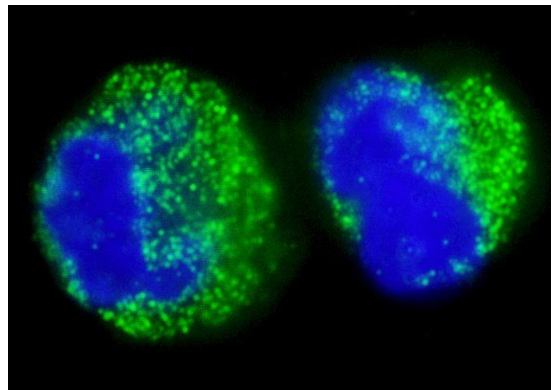
ADDITIONAL INFO <https://www.bethyl.com/product/A302-056A>
Use the link above to view SDS, a current list of citations, and other product specific information.
IP-western blot protocol: https://www.bethyl.com/content/protocol_IP_WB

This document certifies that this product has met all of the quality control standards defined by Bethyl Laboratories, Inc.
Eric McIntush, PhD | Chief Scientific Officer Date: June 21, 2019



Detection of human BCR by western blot of immunoprecipitates. *Samples:* Whole cell lysate (1 mg for IP, 20% of IP loaded) from HeLa cells. *Antibodies:* Affinity purified rabbit anti-BCR antibody A302-056A used for IP at 10 µg/mg lysate. BCR was also immunoprecipitated by rabbit anti-BCR antibody A302-057A, which recognizes a downstream epitope. For blotting immunoprecipitated BCR, A302-057A was used at 1 µg/ml. *Detection:* Chemiluminescence with an exposure time of 10 seconds.

Detection of BCR. 1 × 10⁶ K-562 cells were fixed, permeabilized, and stained with 0.25 µg anti-BCR A302-056A in a 150 µl reaction. Isotype anti-KLH control (black), no antibody (red) and anti-BCR A302-056A (blue).



Detection of human BCR by immunocytochemistry. *Sample:* FFPE section of human K-562 cells (contains the chromosomal translocation, t(9:22) that creates the BCR/ABL fusion gene). *Antibody:* Affinity purified rabbit anti-BCR (Cat. No. A302-056A) used at a dilution of 1:1,000 (1 µg/ml). *Detection:* Green-fluorescent goat anti-rabbit IgG - Alexa Fluor® 488 used at a dilution of 1:1,000.