

# c-Rel Antibody

Rabbit Polyclonal

Antigen Affinity Purified

Protein ID NP\_002899.1

Catalog No. A301-825A

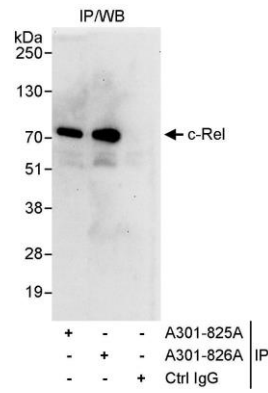
GeneID 5966

Lot No. A301-825A-1



<b>APPLICATIONS</b>	IP
<b>SPECIES REACTIVITY</b>	Human
<b>AMOUNT</b>	100 µl
<b>CONCENTRATION</b>	1000 µg/ml
<b>STORAGE/SHELF LIFE</b>	2 - 8° C / 1 year from date of receipt
<b>PHYSICAL STATE</b>	Liquid
<b>BUFFER</b>	Tris-citrate/phosphate buffer, pH 7 to 8 containing 0.09% Sodium Azide
<b>ISOTYPE</b>	IgG
<b>ORIGIN</b>	USA
<b>PRODUCTION PROCEDURES</b>	Antibody was affinity purified using an epitope specific to c-Rel immobilized on solid support.  The epitope recognized by A301-825A maps to a region between residue 325 and 375 of human reticuloendotheliosis viral oncogene homolog using the numbering given in entry NP_002899.1 (GeneID 5966).  Immunoglobulin concentration was determined by extinction coefficient: absorbance at 280 nm of 1.4 equals 1.0 mg of IgG.
<b>APPLICATIONS</b>	Centrifuge tube to remove product from lid. Optimal working dilutions should be determined experimentally by the investigator. Prepare working dilution immediately before use.  Western Blot                      Not recommended. Use rabbit anti-c-Rel antibody A301-826A.  Immunoprecipitation        2 - 5 µg/mg lysate
<b>APPLICATION NOTES</b>	Western blot of immunoprecipitates performed using Normal Pig Serum (Cat. No. S100-020), Goat anti-Rabbit Light Chain HRP Conjugate (Cat. No. A120-113P) and 4-8% SDS-PAGE (link to IP-western blot protocol in Additional Info section below).
<b>ADDITIONAL INFO</b>	<a href="https://www.bethyl.com/product/A301-825A">https://www.bethyl.com/product/A301-825A</a> Use the link above to view SDS, a current list of citations, and other product specific information. IP-western blot protocol: <a href="https://www.bethyl.com/content/protocol_IP_WB">https://www.bethyl.com/content/protocol_IP_WB</a>

This document certifies that this product has met all of the quality control standards defined by Bethyl Laboratories, Inc.  
Eric McIntush, PhD | Chief Scientific Officer Date: June 21, 2019



**Detection of human c-Rel by western blot of immunoprecipitates.** *Samples:* Whole cell lysate (1 mg for IP, 20% of IP loaded) from HeLa cells. *Antibodies:* Affinity purified rabbit anti-c-Rel antibody A301-825A used for IP at 3  $\mu\text{g}/\text{mg}$  lysate. c-Rel was also immunoprecipitated by rabbit anti-c-Rel antibody A301-826A, which recognizes a downstream epitope. For blotting immunoprecipitated c-Rel, A301-826A was used at 1  $\mu\text{g}/\text{ml}$ . *Detection:* Chemiluminescence with an exposure time of 30 seconds.