

# BIG1 /ARFGEF1 Antibody

Rabbit Polyclonal

Antigen Affinity Purified Protein ID NP\_006412.2  
Catalog No. A300-998A GeneID 10565  
Lot No. A300-998A-2

---

**APPLICATIONS** WB, IP, IHC  
**SPECIES REACTIVITY** Human, Mouse  
**PRESUMED REACTIVITY** Based on 100% sequence identity, this antibody is predicted to react with Rat and Bovine  
**AMOUNT** 100 µl  
**CONCENTRATION** 1000 µg/ml  
**STORAGE/SHELF LIFE** 2 – 8°C / 1 year from date of receipt  
**PHYSICAL STATE** Liquid  
**BUFFER** Tris-citrate/phosphate buffer, pH 7 to 8 containing 0.09% Sodium Azide  
**ISOTYPE** IgG  
**ORIGIN** USA  
**PRODUCTION PROCEDURES** Antibody was affinity purified using an epitope specific to BIG1 /ARFGEF1 immobilized on solid support.

The epitope recognized by A300-998A maps to a region between residue 1800 and the C-terminus (residue 1849) of human brefeldin A-inhibited guanine nucleotide-exchange protein 1 (ADP-ribosylation factor guanine nucleotide-exchange factor 1) using the numbering given in entry NP\_006412.2 (GeneID 10565).

Immunoglobulin concentration was determined by extinction coefficient: absorbance at 280 nm of 1.4 equals 1.0 mg of IgG.

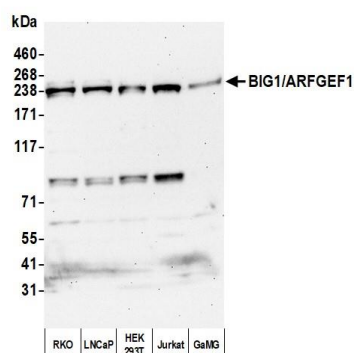
**APPLICATIONS** Centrifuge tube to remove product from lid. Optimal working dilutions should be determined experimentally by the investigator. Prepare working dilution immediately before use.

Western Blot 1:1,000 – 1:10,000  
Immunoprecipitation 2 – 10 µg/mg lysate  
Immunohistochemistry 1:500 – 1:2,000. Epitope retrieval with Tris-EDTA pH 9.0 is recommended for FFPE tissue sections.

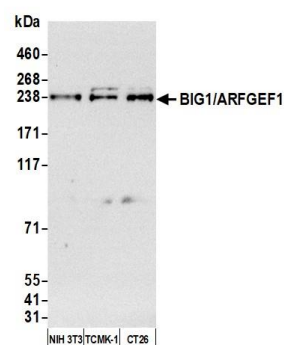
**IHC HUMAN CONTROLS** Breast Carcinoma, Prostate Carcinoma

**ADDITIONAL INFO** <https://www.bethyl.com/product/A300-998A>  
Use the link above to view SDS, a current list of citations, and other product specific information.  
IP-western blot protocol: [https://www.bethyl.com/content/protocol\\_IP\\_WB](https://www.bethyl.com/content/protocol_IP_WB)

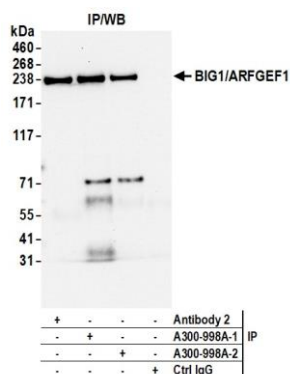
This document certifies that this product has met all of the quality control standards defined by Bethyl Laboratories, Inc.  
Michael Spencer, PhD Date: February 1, 2022

**Detection of human BIG1/ARFGEF1 by western blot.**

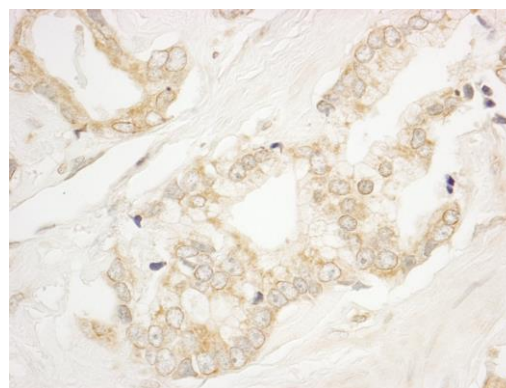
*Samples:* Whole cell lysate (25 µg) from RKO, LNCaP, HEK293T, Jurkat, and GaMG cells prepared using NETN lysis buffer. *Antibody:* Affinity purified rabbit anti-BIG1/ARFGEF1 antibody (A300-998A lot 2) used for WB at 0.1 µg/ml. *Detection:* Chemiluminescence with an exposure time of 30 seconds.

**Detection of human BIG1/ARFGEF1 by western blot.**

*Samples:* Whole cell lysate (25 µg) from NIH 3T3, TCMK-1, and CT26 cells prepared using NETN lysis buffer. *Antibody:* Affinity purified rabbit anti-BIG1/ARFGEF1 antibody (A300-998A lot 2) used for WB at 0.1 µg/ml. *Detection:* Chemiluminescence with an exposure time of 3 minutes.



**Detection of human BIG1/ARFGEF1 by western blot of immunoprecipitates.** *Samples:* Whole cell lysate (1.0 mg per IP reaction; 20% of IP loaded) from RKO cells prepared using NETN lysis buffer. *Antibodies:* Affinity purified rabbit anti-BIG1/ARFGEF1 antibody (A300-998A lot 2) used for IP at 6 µg per reaction. BIG1/ARFGEF1 was also immunoprecipitated by a previous lot of this antibody (A300-998A lot 1) and a second antibody against a different epitope of BIG1/ARFGEF1 (Antibody 2). For blotting immunoprecipitated BIG1/ARFGEF1, A300-998A was used at 0.1 µg/ml. *Detection:* Chemiluminescence with an exposure time of 10 seconds.



**Detection of human BIG1/ARFGEF1 by immunohistochemistry.** *Sample:* FFPE section of human prostate carcinoma. *Antibody:* Affinity purified rabbit anti-BIG1/ARFGEF1 (Cat. No. A300-998A Lot1) used at a dilution of 1:1,000 (1 µg/ml). *Detection:* DAB