

PPP4R1 Antibody

Rabbit Polyclonal

Antigen Affinity Purified

Protein ID NP_005125.1

Catalog No. A300-837A

GeneID 9989

Lot No. A300-837A-1



APPLICATIONS	IP
SPECIES REACTIVITY	Human
AMOUNT	100 µl
CONCENTRATION	1000 µg/ml
STORAGE/SHELF LIFE	2 - 8° C / 1 year from date of receipt
PHYSICAL STATE	Liquid
BUFFER	Tris-citrate/phosphate buffer, pH 7 to 8 containing 0.09% Sodium Azide
ISOTYPE	IgG
ORIGIN	USA
PRODUCTION PROCEDURES	Antibody was affinity purified using an epitope specific to PPP4C immobilized on solid support.

The epitope recognized by A300-837A maps to a region between residue 880 and the C-terminus (residue 933) of human Protein Phosphatase 4, Regulatory Subunit 1 using the numbering given in entry NP_005125.1 (GeneID 9989).

Immunoglobulin concentration was determined by extinction coefficient: absorbance at 280 nm of 1.4 equals 1.0 mg of IgG.

APPLICATIONS Centrifuge tube to remove product from lid. Optimal working dilutions should be determined experimentally by the investigator. Prepare working dilution immediately before use.

Western Blot Not recommended. Use rabbit anti-PPP4R1 antibody A300-836A.

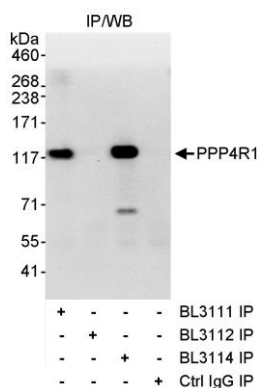
Immunoprecipitation 2 - 5 µg/mg lysate

APPLICATION NOTES Western blot of immunoprecipitates performed using Normal Pig Serum (Cat. No. S100-020), Goat anti-Rabbit Light Chain HRP Conjugate (Cat. No. A120-113P) and 4-8% SDS-PAGE (link to IP-western blot protocol in Additional Info section below).

ADDITIONAL INFO <https://www.bethyl.com/product/A300-837A>

Use the link above to view SDS, a current list of citations, and other product specific information. IP-western blot protocol: https://www.bethyl.com/content/protocol_IP_WB

This document certifies that this product has met all of the quality control standards defined by Bethyl Laboratories, Inc.
Eric McIntush, PhD | Chief Scientific Officer Date: June 21, 2019



Detection of human PPP4R1 by western blot of immunoprecipitates. *Samples:* Whole cell lysate (1 mg for IP, 20% of IP loaded) from HeLa cells. *Antibodies:* Affinity purified rabbit anti-PPP4R1 antibody BL3114 (Cat. No. A300-837A) used for IP at 3 µg/mg lysate. PPP4R1 was also immunoprecipitated by rabbit anti-PPP4R1 antibody BL3111 (Cat. No. A300-836A), which recognizes an upstream epitope. For blotting immunoprecipitated PPP4R1, BL3111 was used at 1 µg/ml. *Detection:* Chemiluminescence with an exposure time of 10 seconds.