

CAP-D3 Antibody

Rabbit Polyclonal

Antigen Affinity Purified

Protein ID NP_056076.1

Catalog No. A300-604A

GeneID 23310

Lot No. A300-604A-4



APPLICATIONS	WB, IP
SPECIES REACTIVITY	Human
AMOUNT	100 µl
CONCENTRATION	200 µg/ml
STORAGE/SHELF LIFE	2 – 8° C / 1 year from date of receipt
PHYSICAL STATE	Liquid
BUFFER	Tris-buffered Saline containing 0.1% BSA and 0.09% Sodium Azide
ISOTYPE	IgG
ORIGIN	USA
PRODUCTION PROCEDURES	Antibody was affinity purified using an epitope specific to CAP-D3 immobilized on solid support.

The epitope recognized by A300-604A maps to a region between residue 1450 and the C-terminus (residue 1498) of human Chromosome-Associated Protein D3 using the numbering given in entry NP_056076.1 (GeneID 23310).

Immunoglobulin concentration was determined by extinction coefficient: absorbance at 280 nm of 1.4 equals 1.0 mg of IgG.

APPLICATIONS Centrifuge tube to remove product from lid. Optimal working dilutions should be determined experimentally by the investigator. Prepare working dilution immediately before use.

Western Blot 1:2,000 – 1:10,000

Immunoprecipitation 2 – 10 µg/mg lysate

APPLICATION NOTES Western blot of immunoprecipitates performed using Normal Pig Serum (Cat. No. S100-020), Goat anti-Rabbit Light Chain HRP Conjugate (Cat. No. A120-113P) and 4-8% SDS-PAGE (link to IP-western blot protocol in Additional Info section below).

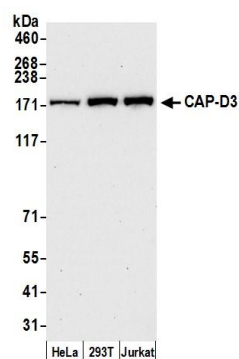
Western blot of lysates performed using standard western blot reagents and 4-8% SDS-PAGE.

ADDITIONAL INFO <https://www.bethyl.com/product/A300-604A>

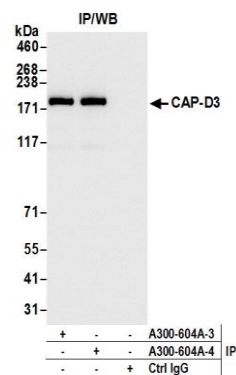
Use the link above to view SDS, a current list of citations, and other product specific information.

IP-western blot protocol https://www.bethyl.com/content/protocol_IP_WB

This document certifies that this product has met all of the quality control standards defined by Bethyl Laboratories, Inc.
Eric McIntush, PhD | Chief Scientific Officer Date: September 18, 2019



Detection of human CAP-D3 by western blot. *Samples:* Whole cell lysate (50 μ g) from HeLa, 293T, and Jurkat cells prepared using NETN lysis buffer. *Antibody:* Affinity purified rabbit anti-CAP-D3 antibody A300-604A (lot A300-604A-4) used for WB at 0.04 μ g/ml. *Detection:* Chemiluminescence with an exposure time of 30 seconds.



Detection of human CAP-D3 by western blot of immunoprecipitates. *Samples:* Whole cell lysate (1.0 mg per IP reaction; 20% of IP loaded) from 293T cells prepared using NETN lysis buffer. *Antibodies:* Affinity purified rabbit anti-CAP-D3 antibody A300-604A (lot A300-604A-4) used for IP at 6 μ g per reaction. CAP-D3 was also immunoprecipitated by a previous lot of this antibody (lot A300-604A-3). For blotting immunoprecipitated CAP-D3, A300-604A was used at 0.2 μ g/ml. *Detection:* Chemiluminescence with an exposure time of 1 second.